

MIPS INSTRUMENT APPROACH CHART

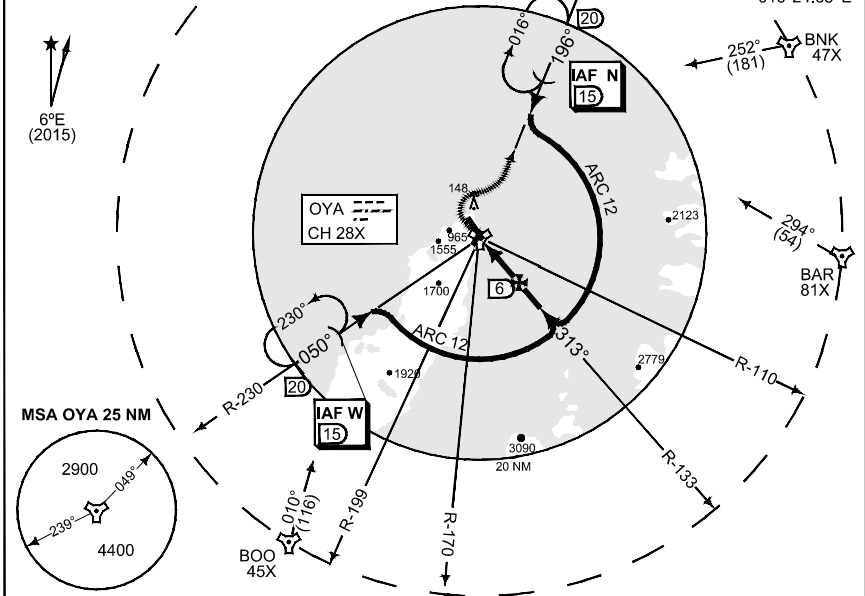
AD ELEV 46

TACAN RWY 32 ANDOEYA (ENAN)

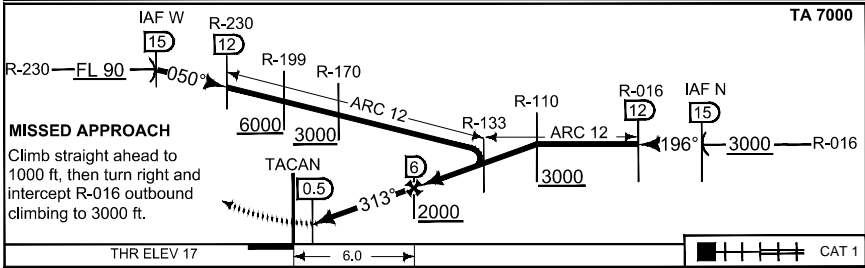
ATIS 136.125	ANDOEYA TWR 118.200 369.250 118.700 257.800						
TACAN OYA CH 28X	APP COURSE 313°	FAF ALT 2000	Descent GR 5.3 %	MDA 380	THR ELEV 17	ALS 900 m	LDA 8093

CAUTION:
 ● CIRCLING NOT AUTHORIZED
 SOUTHWEST OF RWY 14/32
 NO CIRCLING TO RWY 03

IAF W 69°08.76' N
015°33.90' E
 IAF N 69°31.02' N
016°24.65' E



SAFE ALT 100 NM 9000



CATEGORY	A		B		C		D		E	
	S-TAC 32	380 - 0.8		363 (400 - 0.8/1.6)		380 - 1.2		363 (400 - 1.2/2.0)		
● CIRCLING	450 - 1.9 404 (500 - 1.9)		540 - 2.8 494 (500 - 2.8)		640 - 3.7 594 (600 - 3.7)		740 - 4.6 694 (700 - 4.6)		840 - 6.5 794 (800 - 6.5)	

TACAN RWY 32

69°17.55' N
016°08.65' E

ANDOEYA (ENAN)

CHANGES EDITORIAL

RNGAUF 28 APR 2016