

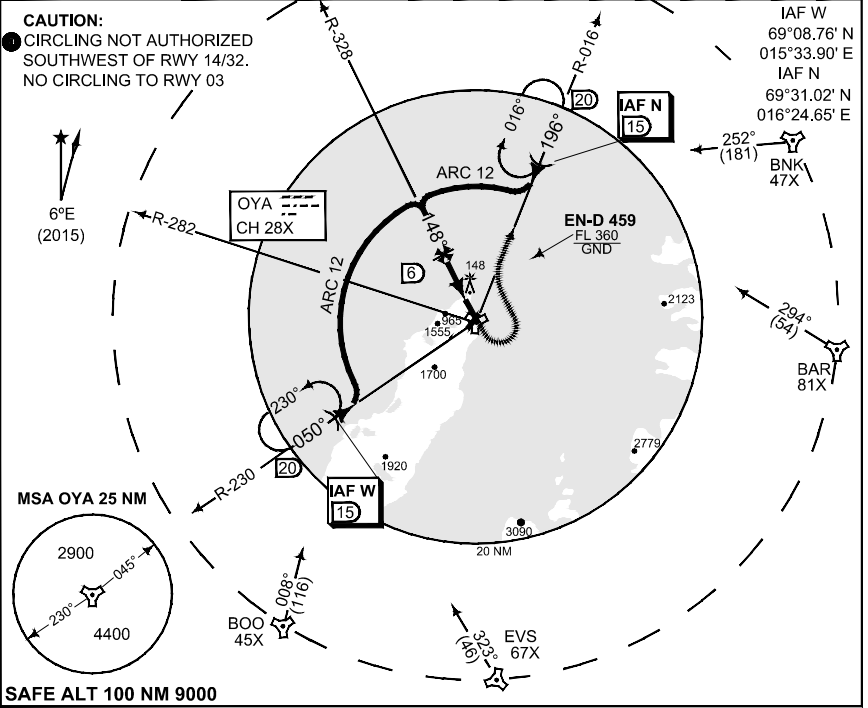
**PANS-OPS  
INSTRUMENT APPROACH CHART**

AD ELEV 46

**TACAN RWY 14  
ANDOEYA (ENAN)**

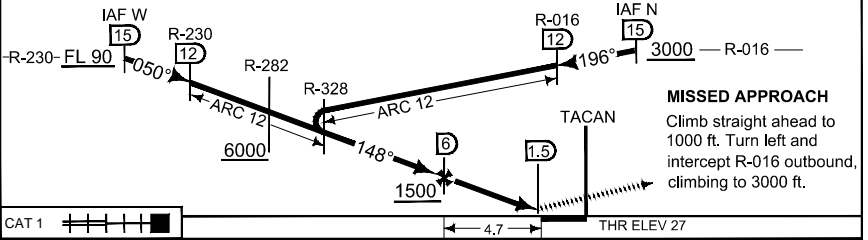
ATIS 136.125	ANDOEYA TWR 118.200 369.250 118.700 257.800						
TACAN OYA 28X	APP COURSE 148°	FAF ALT 1500	Descent GR 5.2%	MDA 490	THR ELEV 27	ALS 900 m	LDA 8093

**CAUTION:**  
● CIRCLING NOT AUTHORIZED  
SOUTHWEST OF RWY 14/32.  
NO CIRCLING TO RWY 03

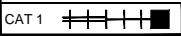


**SAFE ALT 100 NM 9000**

**TA 7000**



**MISSED APPROACH**  
Climb straight ahead to 1000 ft. Turn left and intercept R-016 outbound, climbing to 3000 ft.



MPS	CATEGORY	CHANGES RADIAL LIMIT				
		A	B	C	D	E
●	S-TAC 14	490 - 0.8 444 (500 - 1.9)	463 (500 - 0.8/1.6)	490 - 1.2 463 (500 - 1.2/2.0)	490 - 1.6 463 (500 - 1.6/2.4)	490 - 2.0 463 (500 - 2.0/2.8)
	CIRCLING	490 - 1.9 444 (500 - 1.9)	540 - 2.8 494 (500 - 2.8)	640 - 3.7 594 (600 - 3.7)	740 - 4.6 694 (700 - 4.6)	840 - 6.5 794 (800 - 6.5)

**TACAN RWY 14**

69°17.55' N  
016°08.65' E

**ANDOEYA (ENAN)**

CHANGES RADIAL LIMIT

RNGA/F 23 JUN 2016