

TEL:.....+47 67 03 00 00

E-mail:.....aim@avinor.no



AVINOR

NORWAY

AERONAUTICAL INFORMATION
MANAGEMENT
P.O. BOX 150
NO-2061 GARDERMOEN

AIP AIRAC SUP
20/2025
EFF 15 MAY 2025

Publication date: 02 APR 2025

ENCN - Nye RNP AR-prosedyrer for Kristiansand lufthavn, Kjevik

Vedlagt denne AIP SUP finnes RNP AR-prosedyrer til RWY 03 og RWY 21 ved Kristiansand lufthavn, Kjevik.

De vedlagte prosedyrene publiseres kun for kontrollflygings- og godkjenningøyemed og vil i utgangspunktet ikke være tilgjengelig for vanlige operasjoner. Frem til prosedyrene er godkjente av Luftfartstilsynet er prosedyrene suspenderte.

Operatører bes om å ikke anmode lufttrafikkjenesten om å fly RNP AR-prosedyrer.

Vedlagt er følgende prosedyrer komplett med kart, anbefalt koding og liste med signifikante punkter:

1. RNP E RWY 03 (AR)
2. RNP S RWY 03 (AR)
3. RNP W RWY 03 (AR)
4. RNP E RWY 21 (AR)
5. RNP W RWY 21 (AR)

- Vedlegg -

ENCN - New RNP AR-procedures for Kristiansand airport, Kjevik

Attached to this AIP SUP are RNP AR procedures for RWY 03 and RWY 21 at Kristiansand airport, Kjevik.

The attached procedures are intended solely for flight validation purposes. The procedures have not yet been approved by the Norwegian Civil Aviation Authority and are suspended from normal operational use.

Operators are asked not to request these procedures from Air Traffic Services.

Attached are the following procedures complete with chart, recommended coding and significant points pages:

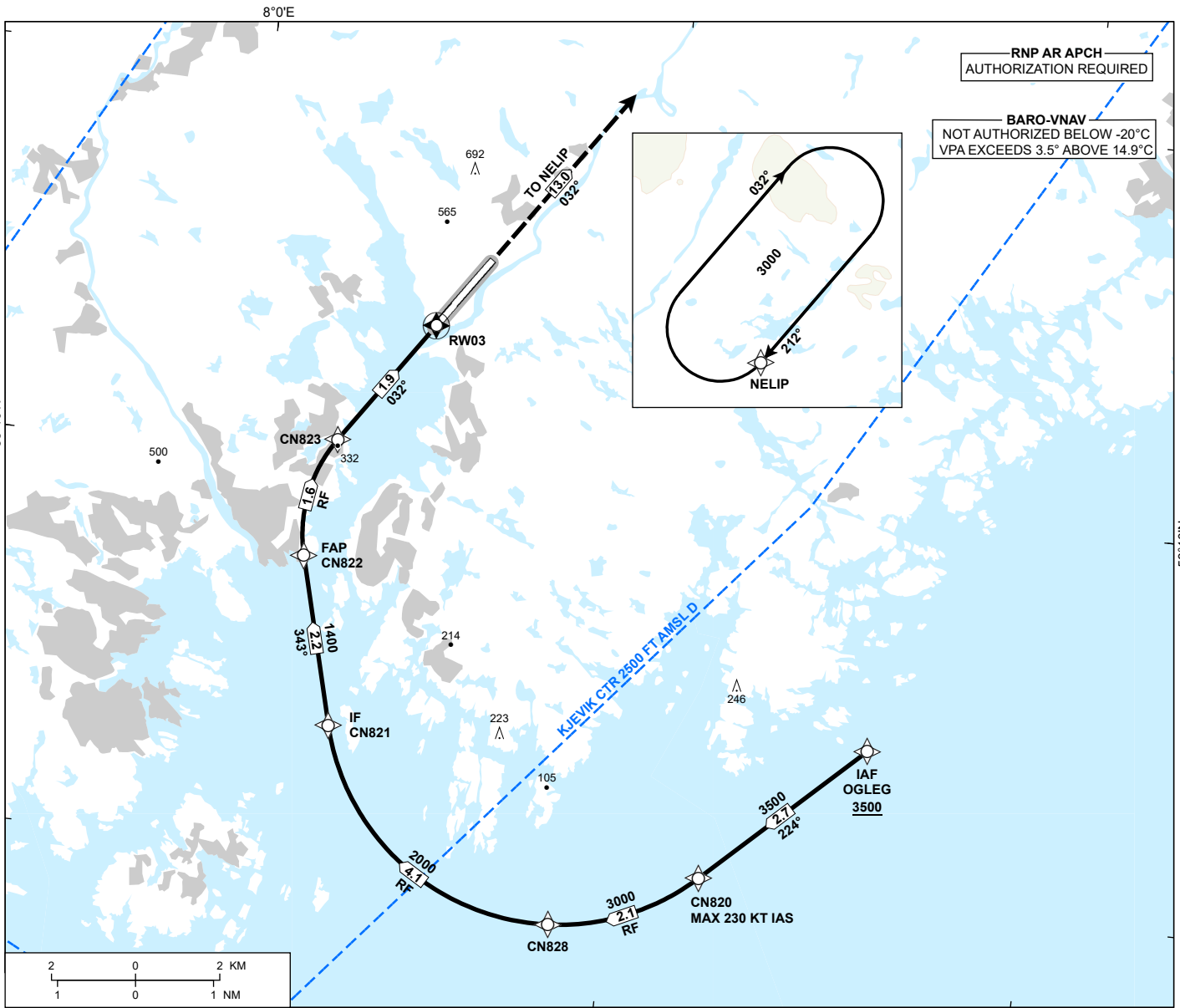
1. RNP E RWY 03 (AR)
2. RNP S RWY 03 (AR)
3. RNP W RWY 03 (AR)
4. RNP E RWY 21 (AR)
5. RNP W RWY 21 (AR)

- Attachment -

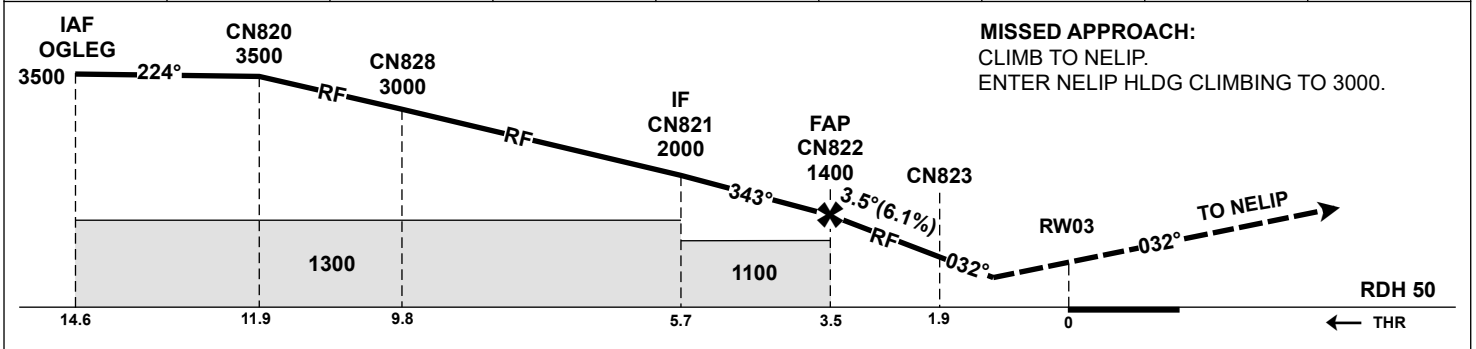
INSTRUMENT APPROACH CHART - ICAO

**KRISTIANSAND
KJEVIK
RNP E RWY 03 (AR)**
TRANSITION ALTITUDE
7000

<p>MSA 25 NM ARP</p>	ATIS: 124.475	AD ELEV: 57
	APP: 119.950	THR ELEV: 40
	TWR: 119.950 118.100	HGT RELATED TO THR 03
		CIRCLING HGT RELATED TO AD ELEV
		DIST IN NM. ELEV, ALT AND HGT IN FT
	SCALE 1:150 000	VAR 3° E (2020)



DIST TO RW03	9	8	7	6	5	4	3	2
ALT (HGT)	-	-	-	-	-	-	-	-



CAT OF ACFT		A	B	C	D
OCA (H) STRAIGHT-IN	RNP 0.3 2.5%*	553 (513)	576 (536)	598 (558)	618 (578)
	RNP 0.3 3.5%*	536 (496)	548 (508)	560 (520)	575 (535)
CIRCLING		-	-	-	-

NOTE: *MNM MISSED APCH CLIMB GRADIENT.

CHANGES: NEW PROCEDURE.

ENCN RNP E RWY 03 (AR) - RECOMMENDED CODING

SN	PD	WI	Fly-over	°M (°T)	MAG VAR	DIST (NM)	REC NAVAID	TD	ALT (FT)	Speed (KT)	VPA (°)/TCH (FT)	ARC CENTRE RADIUS (NM)	RNP (NM)
010	IF	OGLEG	-	-	-3.0	-	-	-	A3500+	-	-	-	1.0
020	TF	CN820	-	-	-3.0	2.7	-	-	A3500+	K230-	-	-	1.0
030	RF	CN828	-	-	-3.0	2.1	-	R	A3000+	-	-	CN840 2.98	1.0
040	RF	CN821	-	-	-3.0	4.1	-	R	A2000+	-	-	CN840 2.98	1.0
050	TF	CN822	-	-	-3.0	2.2	-	-	A1400+	-	-	-	1.0
060	RF	CN823	-	-	-3.0	1.6	-	R	-	-	-3.5	CN841 1.86	0.3
070	TF	RW03	Y	-	-3.0	1.9	-	-	-	-	-3.5/50	-	0.3
080	TF	NELIP	-	-	-3.0	13.0	-	-	A3000+	-	-	-	1.0
090	HM	NELIP	-	212 (215.1)	-3.0	1 MIN	-	R	A3000+	-	-	-	1.0

Note: Recommended coding is based on ARINC 424 and is provided solely to indicate which procedure design protection areas were used in the Instrument Flight Procedure Design process.

Note: Published OCA(H) values are obstacle clearance values. Decision heights (DH) below 250 FT shall not be used due to approach operation Type A limitations.

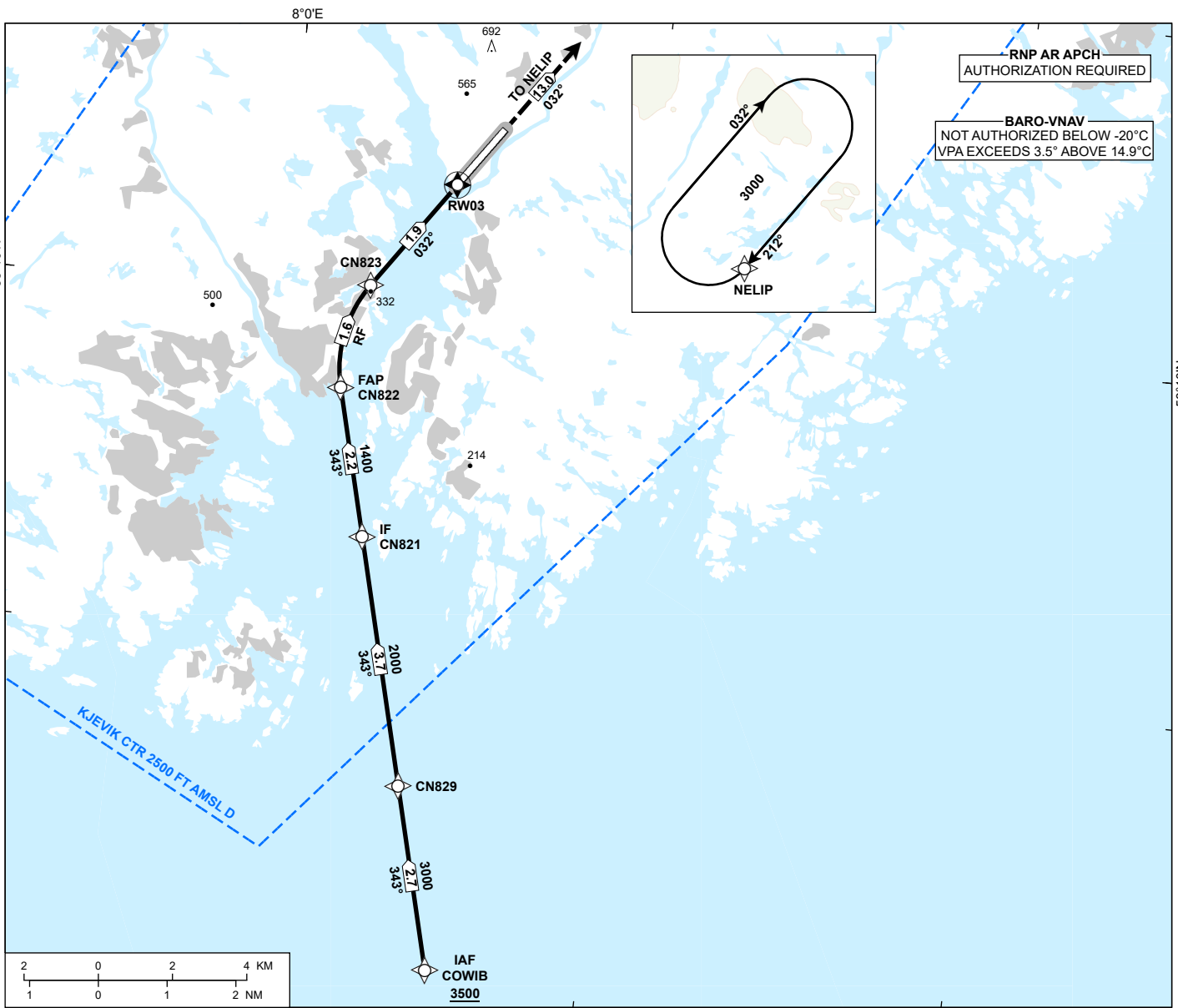
ENCN RNP E RWY 03 (AR) - SIGNIFICANT POINTS

Name	Latitude	Longitude
CN820	580509.04N	0081212.61E
CN821	580636.85N	0080257.26E
CN822	580844.23N	0080156.71E
CN823	581015.23N	0080228.41E
CN828	580422.10N	0080842.67E
CN840	580720.21N	0080824.24E
CN841	580911.35N	0080520.95E
NELIP	582227.09N	0081843.90E
OGLEG	580658.47N	0081557.28E

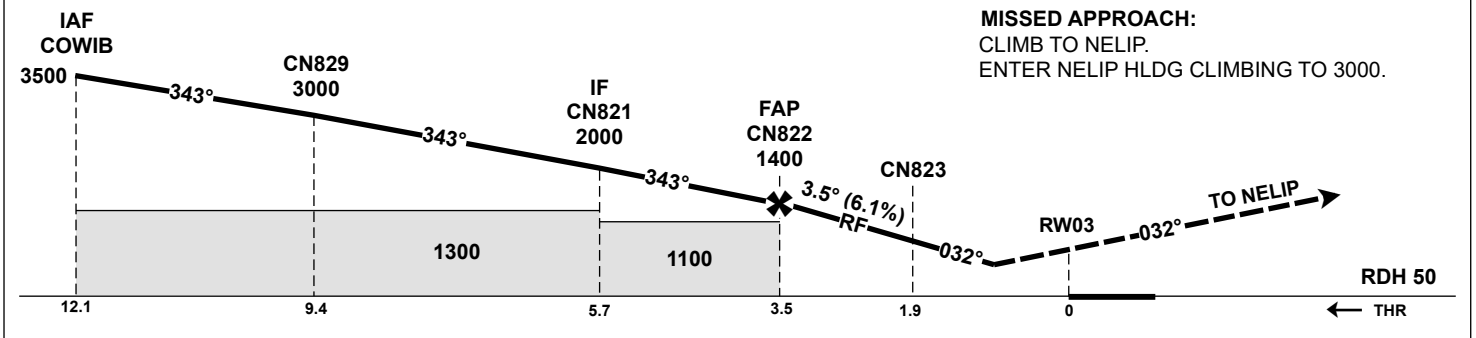
INSTRUMENT APPROACH CHART - ICAO

**KRISTIANSAND
KJEVIK
RNP S RWY 03 (AR)**
TRANSITION ALTITUDE
7000

<p>MSA 25 NM ARP</p>	ATIS: 124.475	AD ELEV: 57
	APP: 119.950	THR ELEV: 40
	TWR: 119.950 118.100	HGT RELATED TO THR 03
		CIRCLING HGT RELATED TO AD ELEV
		DIST IN NM. ELEV, ALT AND HGT IN FT
	SCALE 1:170 000	VAR 3° E (2020)



DIST TO RW03	9	8	7	6	5	4	3	2
ALT (HGT)	-	-	-	-	-	-	-	-



CAT OF ACFT		A	B	C	D
OCA (H) STRAIGHT- IN	RNP 0.3 2.5%*	553 (513)	576 (536)	598 (558)	618 (578)
	RNP 0.3 3.5%*	536 (496)	548 (508)	560 (520)	575 (535)
CIRCLING		-	-	-	-

NOTE: *MNM MISSED APCH CLIMB GRADIENT.

CHANGES: NEW PROCEDURE.

ENCN RNP S RWY 03 (AR) - RECOMMENDED CODING

SN	PD	WI	Fly-over	°M (°T)	MAG VAR	DIST (NM)	REC NAVAID	TD	ALT (FT)	Speed (KT)	VPA (°)/TCH (FT)	ARC CENTRE RADIUS (NM)	RNP (NM)
010	IF	COWIB	-	-	-3.0	-	-	-	A3500+	-	-	-	1.0
020	TF	CN829	-	-	-3.0	2.7	-	-	A3000+	-	-	-	1.0
030	TF	CN821	-	-	-3.0	3.7	-	-	A2000+	-	-	-	1.0
040	TF	CN822	-	-	-3.0	2.2	-	-	A1400+	-	-	-	1.0
050	RF	CN823	-	-	-3.0	1.6	-	R	-	-	-3.5	CN841 1.86	0.3
060	TF	RW03	Y	-	-3.0	1.9	-	-	-	-	-3.5/50	-	0.3
070	TF	NELIP	-	-	-3.0	13.0	-	-	A3000+	-	-	-	1.0
080	HM	NELIP	-	212 (215.1)	-3.0	1 MIN	-	R	A3000+	-	-	-	1.0

Note: Recommended coding is based on ARINC 424 and is provided solely to indicate which procedure design protection areas were used in the Instrument Flight Procedure Design process.

Note: Published OCA(H) values are obstacle clearance values. Decision heights (DH) below 250 FT shall not be used due to approach operation Type A limitations.

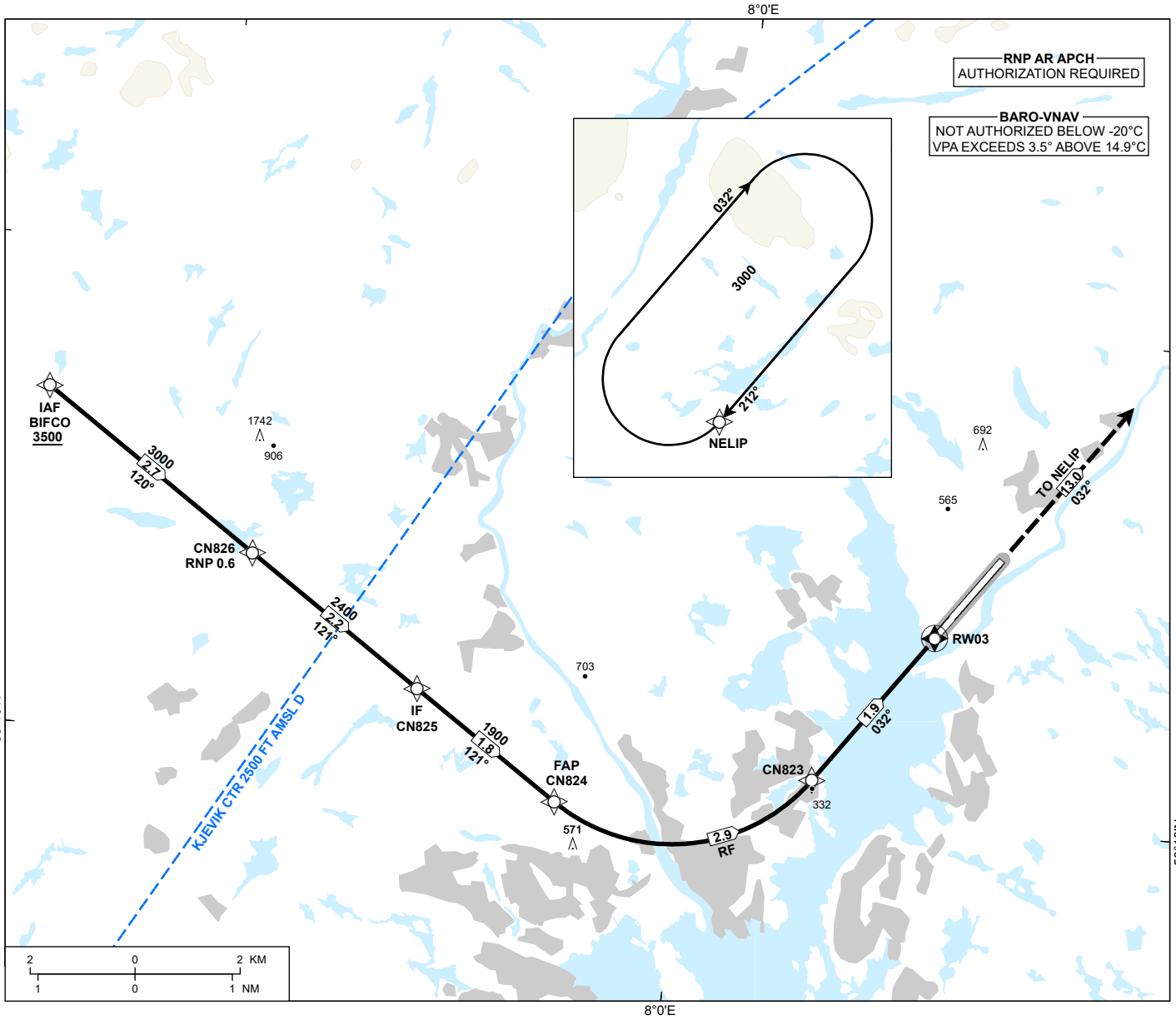
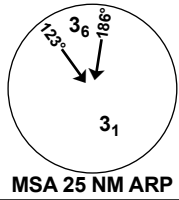
ENCN RNP S RWY 03 (AR) - SIGNIFICANT POINTS

Name	Latitude	Longitude
CN821	580636.85N	0080257.26E
CN822	580844.23N	0080156.71E
CN823	581015.23N	0080228.41E
CN829	580304.53N	0080437.92E
CN841	580911.35N	0080520.95E
COWIB	580027.76N	0080552.02E
NELIP	582227.09N	0081843.90E

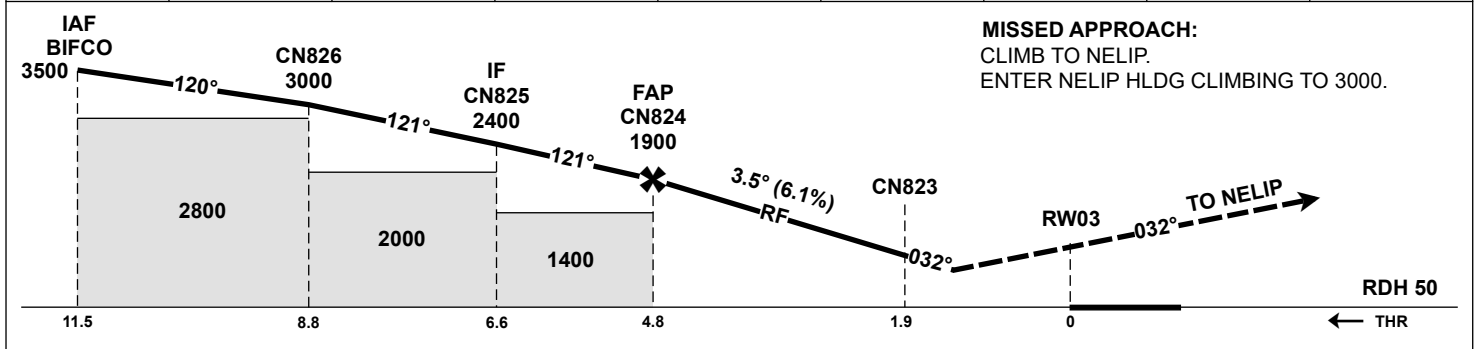
INSTRUMENT APPROACH CHART - ICAO

**KRISTIANSAND
KJEVIK**
RNP W RWY 03 (AR)
TRANSITION ALTITUDE
7000

ATIS: 124.475	AD ELEV: 57
APP: 119.950	THR ELEV: 40
TWR: 119.950 118.100	HGT RELATED TO THR 03
	CIRCLING HGT RELATED TO AD ELEV
	DIST IN NM. ELEV, ALT AND HGT IN FT
SCALE 1:120 000	VAR 3°E (2020)



DIST TO RW03	9	8	7	6	5	4	3	2
ALT (HGT)	-	-	-	-	-	-	-	-



CAT OF ACFT		A	B	C	D
OCA (H) STRAIGHT- IN	RNP 0.3 2.5%*	553 (513)	576 (536)	598 (558)	618 (578)
	RNP 0.3 3.5%*	536 (496)	548 (508)	560 (520)	575 (535)
CIRCLING		-	-	-	-

NOTE: *MNM MISSED APCH CLIMB GRADIENT.

CHANGES: NEW PROCEDURE.

ENCN RNP W RWY 03 (AR) - RECOMMENDED CODING

SN	PD	WI	Fly-over	°M (°T)	MAG VAR	DIST (NM)	REC NAVAID	TD	ALT (FT)	Speed (KT)	VPA (°)/TCH (FT)	ARC CENTRE RADIUS (NM)	RNP (NM)
010	IF	BIFCO	-	-	-3.0	-	-	-	A3500+	-	-	-	1.0
020	TF	CN826	-	-	-3.0	2.7	-	-	A3000+	-	-	-	1.0
030	TF	CN825	-	-	-3.0	2.2	-	-	A2400+	-	-	-	0.6
040	TF	CN824	-	-	-3.0	1.8	-	-	A1900+	-	-	-	0.6
050	RF	CN823	-	-	-3.0	2.9	-	L	-	-	-3.5	CN842 1.9	0.3
060	TF	RW03	Y	-	-3.0	1.9	-	-	-	-	-3.5/50	-	0.3
070	TF	NELIP	-	-	-3.0	13.0	-	-	A3000+	-	-	-	1.0
080	HM	NELIP	-	212 (215.1)	-3.0	1 MIN	-	R	A3000+	-	-	-	1.0

Note: Recommended coding is based on ARINC 424 and is provided solely to indicate which procedure design protection areas were used in the Instrument Flight Procedure Design process.

Note: Published OCA(H) values are obstacle clearance values. Decision heights (DH) below 250 FT shall not be used due to approach operation Type A limitations.

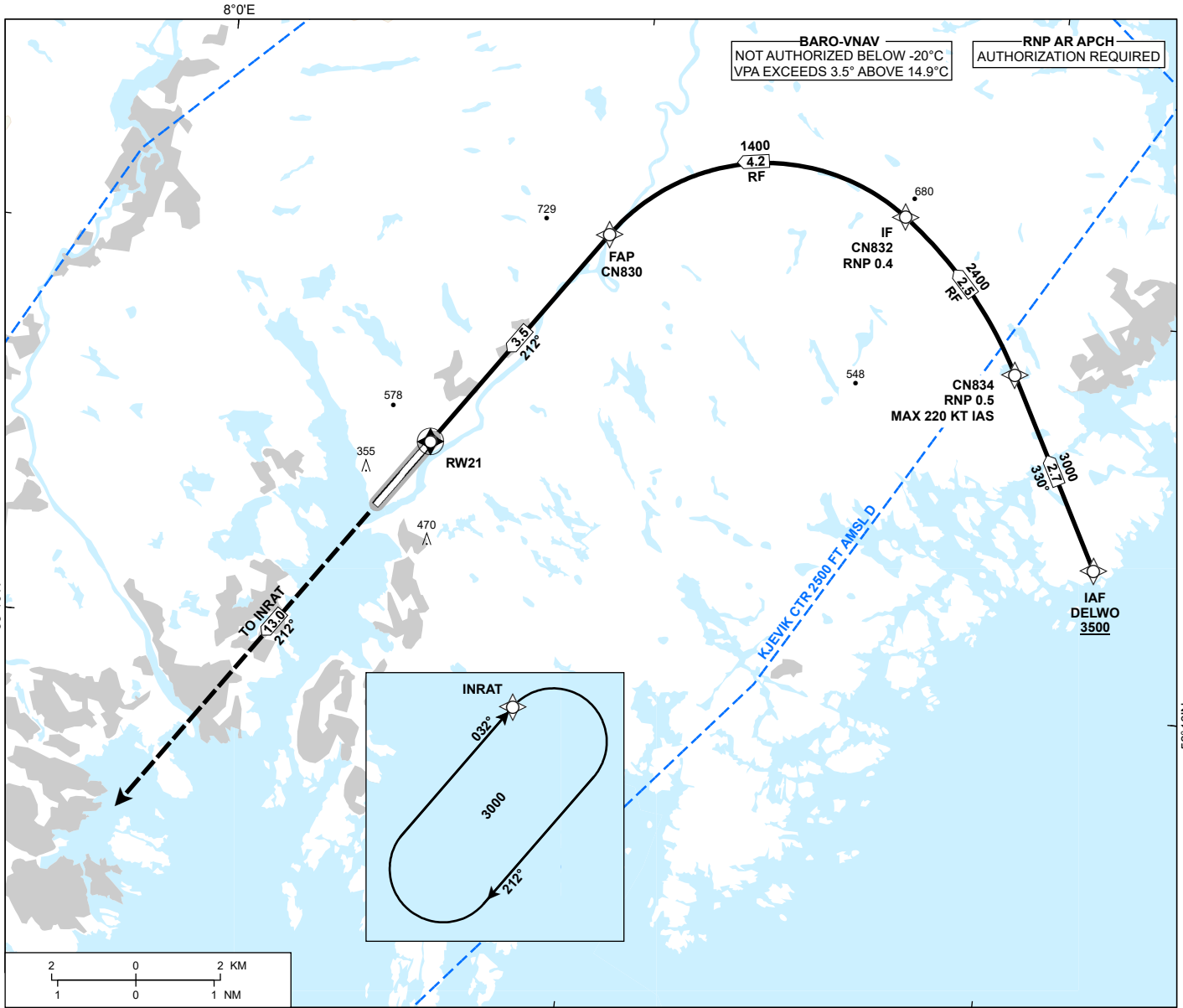
ENCN RNP W RWY 03 (AR) - SIGNIFICANT POINTS

Name	Latitude	Longitude
BIFCO	581327.81N	0074657.80E
CN823	581015.23N	0080228.41E
CN824	580945.67N	0075732.90E
CN825	581046.14N	0075440.31E
CN826	581158.64N	0075113.21E
CN842	581120.42N	0075931.98E
NELIP	582227.09N	0081843.90E

INSTRUMENT APPROACH CHART - ICAO

**KRISTIANSAND
KJEVIK
RNP E RWY 21 (AR)**
TRANSITION ALTITUDE
7000

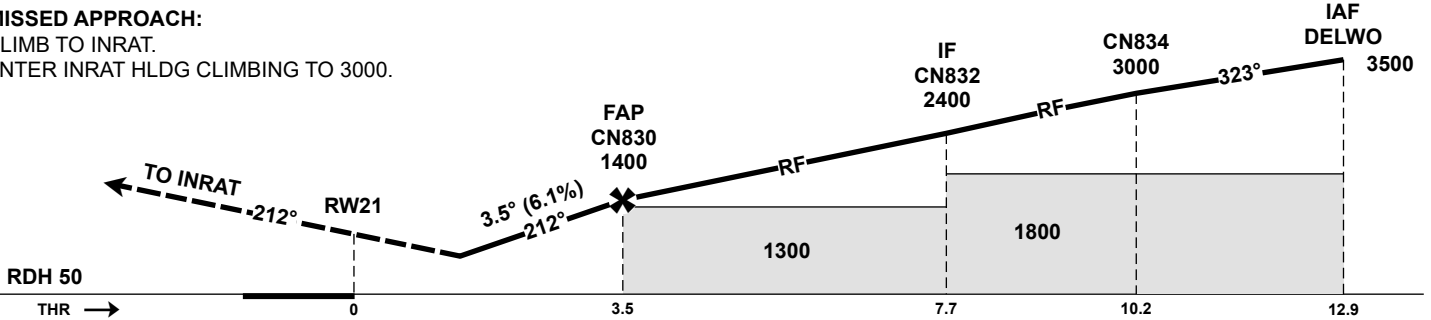
<p>MSA 25 NM ARP</p>	ATIS: 124.475	AD ELEV: 57
	APP: 119.950	THR ELEV: 51
	TWR: 119.950 118.100	HGT RELATED TO THR 21
		CIRCLING HGT RELATED TO AD ELEV
		DIST IN NM. ELEV, ALT AND HGT IN FT
	SCALE 1:150 000	VAR 3°E (2020)



DIST TO RW21	9	8	7	6	5	4	3	2
ALT (HGT)	-	-	-	-	-	-	-	-

MISSED APPROACH:

CLIMB TO INRAT.
ENTER INRAT HLDG CLIMBING TO 3000.



CAT OF ACFT		A	B	C	D
OCA (H) STRAIGHT- IN	RNP 0.3	673 (622)	685 (634)	698 (647)	718 (667)
		-	-	-	-
CIRCLING		-	-	-	-

NOTE: -

CHANGES: NEW PROCEDURE.

ENCN RNP E RWY 21 (AR) - RECOMMENDED CODING

SN	PD	WI	Fly-over	°M (°T)	MAG VAR	DIST (NM)	REC NAVAID	TD	ALT (FT)	Speed (KT)	VPA (°)/TCH (FT)	ARC CENTRE RADIUS (NM)	RNP (NM)
010	IF	DELWO	-	-	-3.0	-	-	-	A3500+	-	-	-	1.0
020	TF	CN834	-	-	-3.0	2.7	-	-	A3000+	K220-	-	-	1.0
030	RF	CN832	-	-	-3.0	2.5	-	L	A2400+	-	-	CN847 5.5	0.5
040	RF	CN830	-	-	-3.0	4.2	-	L	A1400+	-	-	CN843 2.64	0.4
050	TF	RW21	Y	-	-3.0	3.5	-	-	-	-	-3.5/50	-	0.3
060	TF	INRAT	-	-	-3.0	13.0	-	-	A3000+	-	-	-	1.0
070	HM	INRAT	-	032 (034.9)	-3.0	1 MIN	-	R	A3000+	-	-	-	1.0

Note: Recommended coding is based on ARINC 424 and is provided solely to indicate which procedure design protection areas were used in the Instrument Flight Procedure Design process.

Note: Published OCA(H) values are obstacle clearance values. Decision heights (DH) below 250 FT shall not be used due to approach operation Type A limitations.

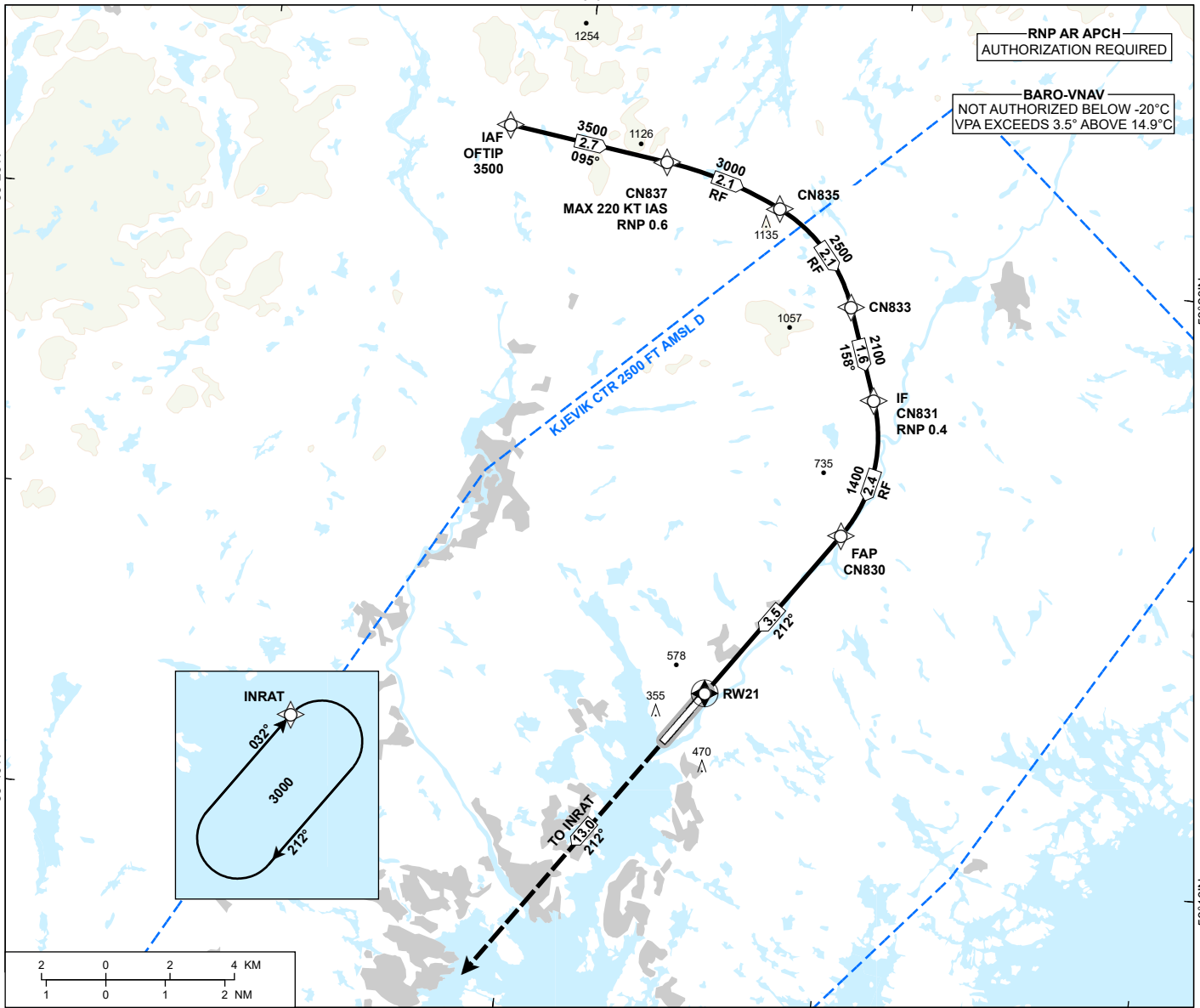
ENCN RNP E RWY 21 (AR) - SIGNIFICANT POINTS

Name	Latitude	Longitude
CN830	581530.68N	0080927.16E
CN832	581606.66N	0081631.61E
CN834	581415.02N	0081931.89E
CN843	581359.93N	0081332.53E
CN847	581142.56N	0081018.93E
DELWO	581151.67N	0082153.34E
INRAT	580200.77N	0075137.17E

INSTRUMENT APPROACH CHART - ICAO

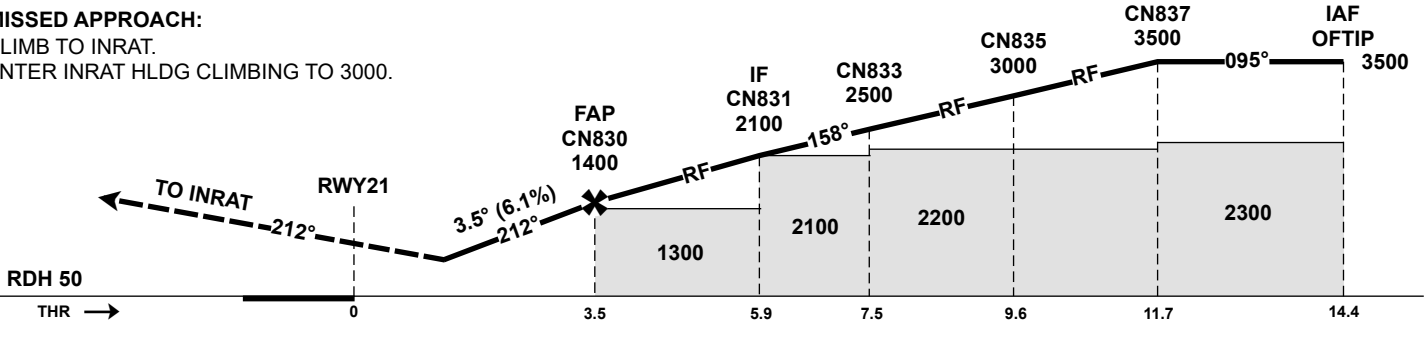
**KRISTIANSAND
KJEVIK**
RNP W RWY 21 (AR)
TRANSITION ALTITUDE
7000

<p>MSA 25 NM ARP</p>	ATIS: 124.475	AD ELEV: 57
	APP: 119.950	THR ELEV: 51
	TWR: 119.950 118.100	HGT RELATED TO THR 21
		CIRCLING HGT RELATED TO AD ELEV
		DIST IN NM. ELEV, ALT AND HGT IN FT
	SCALE 1:200 000	VAR 3°E (2020)



DIST TO RW21	9	8	7	6	5	4	3	2
ALT (HGT)	-	-	-	-	-	-	-	-

MISSED APPROACH:
CLIMB TO INRAT.
ENTER INRAT HLDG CLIMBING TO 3000.



CAT OF ACFT		A	B	C	D
OCA (H)	RNP 0.3	673 (622)	685 (634)	698 (647)	718 (667)
STRAIGHT- IN		-	-	-	-
CIRCLING		-	-	-	-

NOTE:

CHANGES: NEW PROCEDURE.

ENCN RNP W RWY 21 (AR) - RECOMMENDED CODING

SN	PD	WI	Fly-over	°M (°T)	MAG VAR	DIST (NM)	REC NAVAID	TD	ALT (FT)	Speed (KT)	VPA (°)/TCH (FT)	ARC CENTRE RADIUS (NM)	RNP (NM)
010	IF	OFTIP	-	-	-3.0	-	-	-	A3500+	-	-	-	1.0
020	TF	CN837	-	-	-3.0	2.7	-	-	A3500+	K220-	-	-	1.0
030	RF	CN835	-	-	-3.0	2.1	-	R	A3000+	-	-	CN848 6.5	0.6
040	RF	CN833	-	-	-3.0	2.1	-	R	A2500+	-	-	CN845 2.67	0.6
050	TF	CN831	-	-	-3.0	1.6	-	-	A2100+	-	-	-	0.6
060	RF	CN830	-	-	-3.0	2.4	-	R	A1400+	-	-	CN846 2.55	0.4
070	TF	RW21	Y	-	-3.0	3.5	-	-	-	-	-3.5/50	-	0.3
080	TF	INRAT	-	-	-3.0	13.0	-	-	A3000+	-	-	-	1.0
090	HM	INRAT	-	032 (034.9)	-3.0	1 MIN	-	R	A3000+	-	-	-	1.0

Note: Recommended coding is based on ARINC 424 and is provided solely to indicate which procedure design protection areas were used in the Instrument Flight Procedure Design process.

Note: Published OCA(H) values are obstacle clearance values. Decision heights (DH) below 250 FT shall not be used due to approach operation Type A limitations.

ENCN RNP W RWY 21 (AR) - SIGNIFICANT POINTS

Name	Latitude	Longitude
CN830	581530.68N	0080927.16E
CN831	581748.96N	0081003.15E
CN833	581920.11N	0080902.15E
CN835	582050.90N	0080627.71E
CN837	582126.08N	0080244.26E
CN845	581826.95N	0080415.74E
CN846	581658.19N	0080529.80E
CN848	581500.38N	0080106.94E
INRAT	580200.77N	0075137.17E
OFTIP	582147.28N	0075739.40E