

TEL:.....+47 67 03 00 00

E-mail:.....aim@avinor.no



# AVINOR

## NORWAY

AERONAUTICAL INFORMATION  
MANAGEMENT  
P.O. BOX 150  
NO-2061 GARDERMOEN

**AIP AIRAC SUP**  
**21/2024**  
**EFF 08 AUG 2024**

**Publication date: 08 JUL 2024**

**ENZV - Korrigering av Sola Visual Approach Chart (VAC)**

**ENZV - Correction of Sola Visual Approach Chart (VAC)**

Sola TMA-del nedre grense korrigeret fra 2500 fot til 1500 fot.

Sola TMA part lower limit corrected from 2500 ft to 1500 ft.

- Vedlegg -

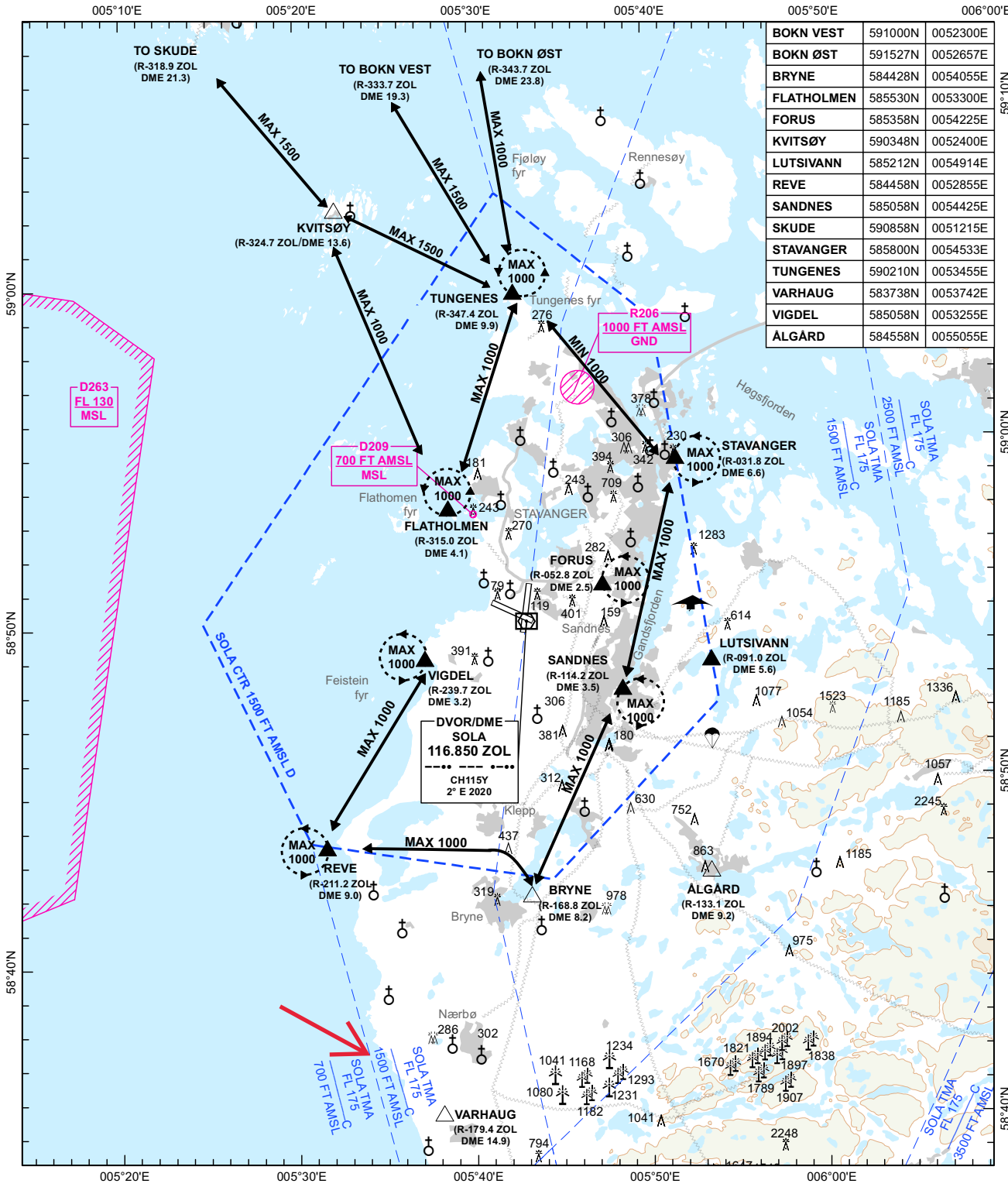
- Attachment -

**VAC - VISUAL APPROACH CHART PLAN VIEW SCALE:1:325 000**

ATIS: 126.000	AERODROME ELEVATION: 30 FT	ELEV, ALT AND HGT IN FT
APP: 119.600 118.500	OBSTACLES LESS THAN 100 FT GND ARE NORMALLY NOT SHOWN	
ARR: 119.400	MAGNETIC VARIATION: 2° E (2020)	
TWR: 118.350 122.100	TRANSITION ALTITUDE: 7000	
GND: 121.750		

**STAVANGER**  
**SOLA**  
**NORWAY**

BOKN VEST	591000N	0052300E
BOKN ØST	591527N	0052657E
BRYNE	584428N	0054055E
FLATHOLMEN	585530N	0053300E
FORUS	585358N	0054225E
KVITSØY	590348N	0052400E
LUTSIVANN	585212N	0054914E
REVE	584458N	0052855E
SANDNES	585058N	0054425E
SKUDE	590858N	0051215E
STAVANGER	585800N	0054533E
TUNGENES	590210N	0053455E
VARHAUG	583738N	0053742E
VIGDEL	585058N	0053255E
ALGÅRD	584558N	0055055E



**VFR RCF PROC**  
 1. SQUAWK 7600.  
 2. IF ABLE CALL TWR ON PHONE +47- 51 65 81 43  
 3. PROCEED VIA ROUTES SHOWN TO EITHER:  
 - SOLA CHURCH, 1NM NW OF AD, OR  
 - FOOTBALL STADIUM, 1 NM NE OF AD.  
 4. HOLD AT 500 FT.  
 FLASH LDG LIGHTS.WATCH TWR FOR LIGHT SIGNALS.

**PAPI**  
 PAPI RWY 18: DUAL 3° MEHT 60 FT.  
 PAPI RWY 36: DUAL 3° MEHT 56 FT.  
 PAPI RWY 10: SINGLE 3° MEHT 47 FT.  
 PAPI RWY 28: DUAL 3.5° MEHT 40 FT.

**DESCENT CLEARANCE FOR VISUAL APCH**  
 DESCENT BELOW 2000 FT IS SUBJECT TO SPECIFIC CLEARANCE FROM ATC.

1 0 1 2 3 4 5 6 7 8 9 10 KM  
 1 0 1 2 3 4 5 NM

ATS AIRSPACE CLASSIFICATION:  
 TMA, CTR: CLASS C, D  
 UNCONTROLLED AIRSPACE: CLASS G  
 SEE ALSO REF ENR 1.4  
 LEGENDS: REF GEN 2.3

CHANGES: D256 WITHDRAWN.