

TEL:.....+47 67 03 00 00

E-mail:.....aim@avinor.no



AVINOR

NORWAY

AERONAUTICAL INFORMATION
MANAGEMENT
P.O. BOX 150
NO-2061 GARDERMOEN

AIP AIRAC SUP
27/2023
EFF 30 NOV 2023

Publication date: 02 NOV 2023

ENKR – Nye RNP AR-prosedyrer på Kirkenes lufthavn, Høybuktnoen

Vedlagt denne AIP SUP finnes RNP AR-prosedyrer til RWY 05 og RWY 23 ved Kirkenes lufthavn, Høybuktnoen.

De vedlagte prosedyrene publiseres kun for kontrollflygings- og godkjenningøyemed og vil i utgangspunktet ikke være tilgjengelig for vanlige operasjoner. Frem til prosedyrene er godkjente av Luftfartstilsynet er prosedyrene suspenderte. Operatører bes om å ikke anmode lufttrafikkjenesten om å fly RNP AR-prosedyrer.

Vedlagt er følgende prosedyrer komplett med kart, anbefalt koding og liste med signifikante punkter:

1. RNP N RWY 05 (AR)
2. RNP S RWY 05 (AR)
3. RNP W RWY 05 (AR)
4. RNP N RWY 23 (AR)
5. RNP W RWY 23 (AR)

- Vedlegg -

ENKR – New RNP AR procedures at Kirkenes airport, Høybuktnoen

Attached to this AIP SUP are RNP AR procedures to RWY 05 and RWY 23 at Kirkenes Airport, Høybuktnoen.

The attached procedures are intended solely for flight validation purposes. The procedures have not yet been approved by the Norwegian Civil Aviation Authority and are suspended from normal operational use. Operators are asked not to request these procedures from Air Traffic Services.

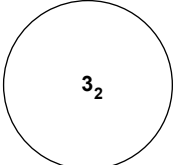
Attached are the following procedures complete with chart, recommended coding and significant points pages:

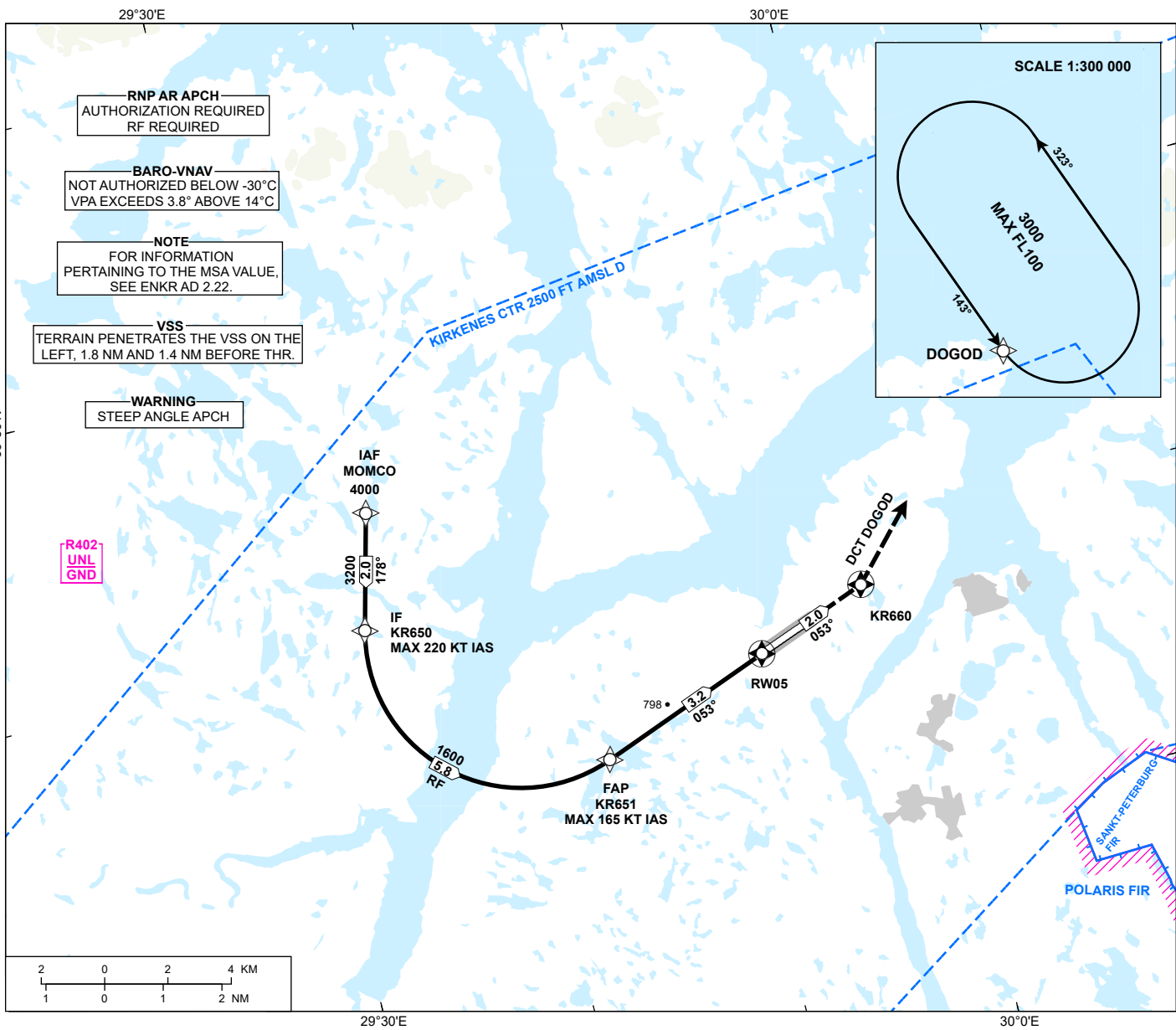
1. RNP N RWY 05 (AR)
2. RNP S RWY 05 (AR)
3. RNP W RWY 05 (AR)
4. RNP N RWY 23 (AR)
5. RNP W RWY 23 (AR)

- Attachment -

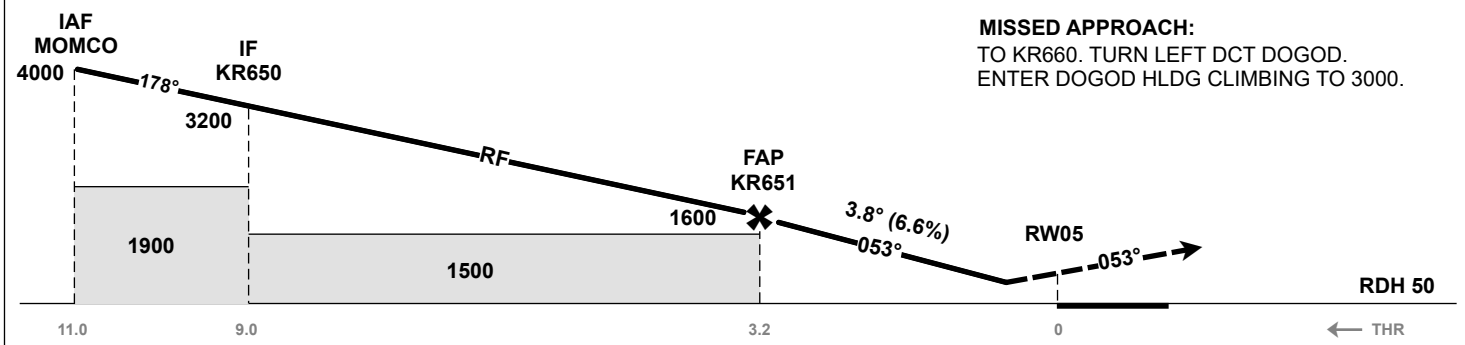
INSTRUMENT APPROACH CHART - ICAO

**KIRKENES
HØYBUKTMOEN
RNP N RWY 05 (AR)**
TRANSITION ALTITUDE
7000

 MSA 25 NM ARP	ATIS: 118.025	AD ELEV: 285
	TWR: 120.350 118.100 (122.100)	THR ELEV: 279
		HGT RELATED TO THR 05
		CIRCLING HGT RELATED TO AD ELEV
		DIST IN NM. ELEV, ALT AND HGT IN FT
	SCALE 1:200 000	VAR 16° E (2020)



DIST TO RW05	9	8	7	6	5	4	3	2
ALT (HGT)	-	-	-	-	-	-	-	-



MISSED APPROACH:
TO KR660. TURN LEFT DCT DOGOD.
ENTER DOGOD HLDG CLIMBING TO 3000.

CAT OF ACFT		A	B	C	D
OCA (H) STRAIGHT-IN	RNP 0.3	991 (712)	1005 (726)	1019 (740)	1033 (754)

NOTE:

CHANGES: NEW PROCEDURE.

ENKR RNP N RWY 05 (AR) - RECOMMENDED CODING

SN	PD	WI	Fly-over	°M (°T)	MAG VAR	DIST (NM)	REC NAVAID	TD	ALT (FT)	Speed (KT)	VPA (°)/TCH (FT)	ARC CENTRE RADIUS (NM)	RNP (NM)
10	IF	MOMCO	-	-	-16.0	-	-	-	A4000+	-	-	-	1.0
20	TF	KR650	-	-	-16.0	2.0	-	-	A3200+	K220-	-	-	1.0
30	RF	KR651	-	-	-16.0	5.8	-	L	A1600+	K165-	-	KR003 2.650	1.0
40	TF	RW05	Y	-	-16.0	3.2	-	-	-	-	-3.8/50	-	0.3
50	TF	KR660	Y	-	-16.0	2.0	-	-	-	-	-	-	1.0
60	DF	DOGOD	-	-	-16.0	-	-	L	A3000	-	-	-	1.0
70	HM	DOGOD	-	143 (159.5)	-16.0	1 MIN	-	L	A3000	-	-	-	1.0

Note: Recommended coding is based on ARINC 424 and is provided solely to indicate which procedure design protection areas were used in the Instrument Flight Procedure Design process.

Note: Published OCA(H) values are obstacle clearance values. Decision heights (DH) below 250 FT shall not be used due to approach operation Type A limitations.

ENKR RNP N RWY 05 (AR) - SIGNIFICANT POINTS

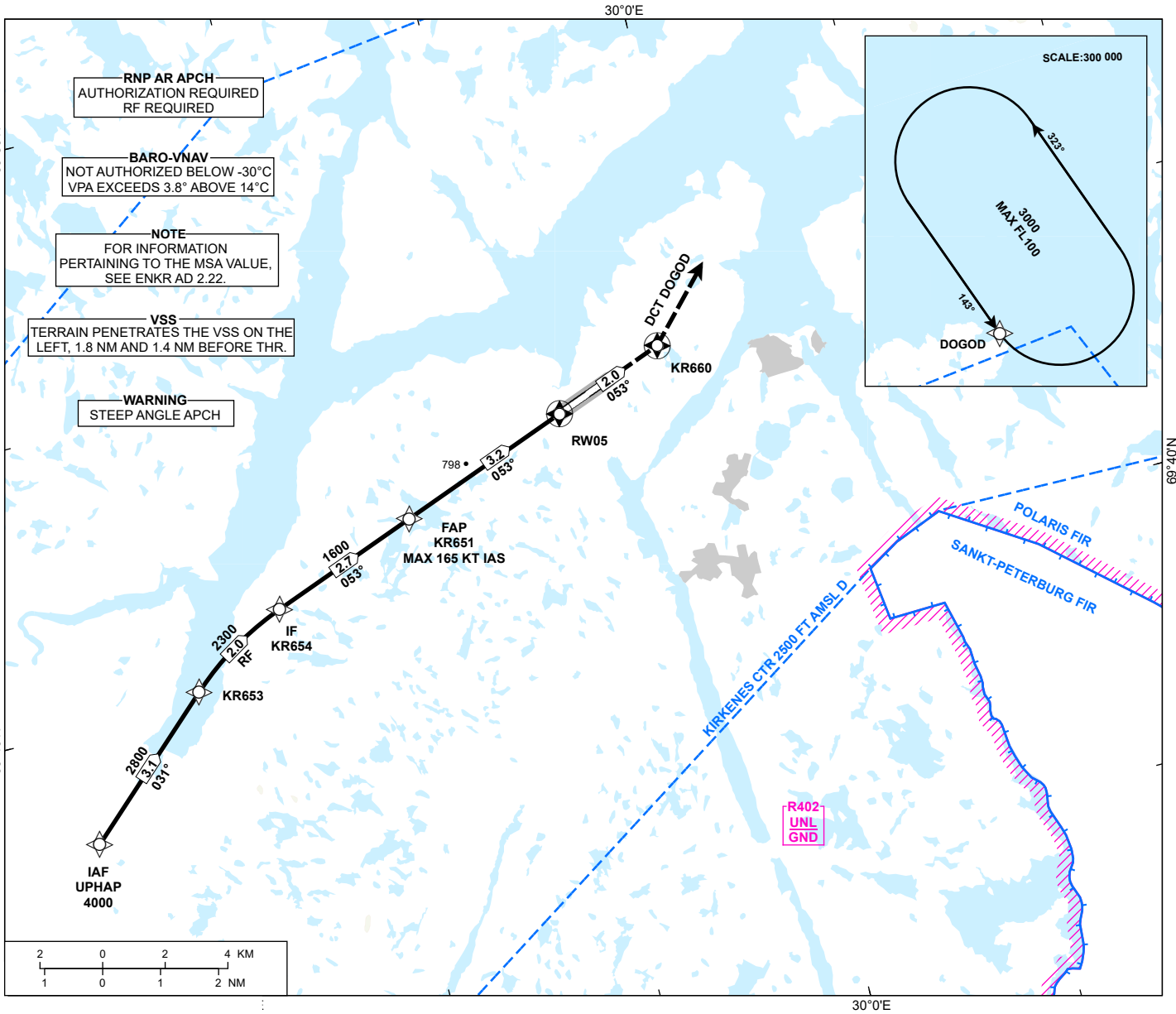
Name	Latitude	Longitude
DOGOD	695217.34N	0301943.62E
KR003	694441.16N	0294055.09E
KR650	694520.05N	0293331.88E
KR651	694213.42N	0294339.56E
KR660	694404.68N	0295735.97E
MOMCO	694715.94N	0293456.42E

CHANGES: NEW PAGE

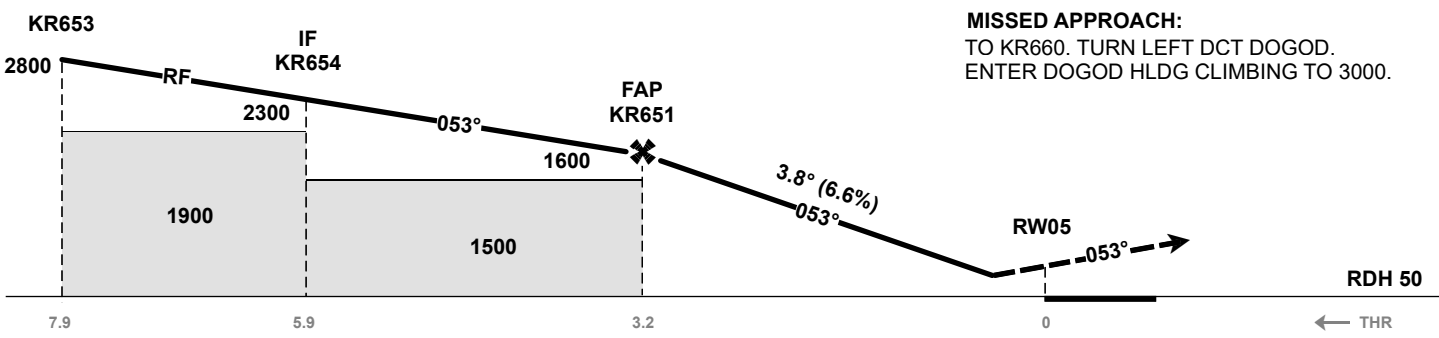
INSTRUMENT APPROACH CHART - ICAO

**KIRKENES
HØYBUKTMOEN
RNP S RWY 05 (AR)**
TRANSITION ALTITUDE
7000

<p>MSA 25 NM ARP</p>	ATIS: 118.025	AD ELEV: 285
	TWR: 120.350 118.100 (122.100)	THR ELEV: 279
		HGT RELATED TO THR 05
		CIRCLING HGT RELATED TO AD ELEV
		DIST IN NM. ELEV, ALT AND HGT IN FT
	SCALE 1:200 000	VAR 16° E (2020)



DIST TO RW05	9	8	7	6	5	4	3	2
ALT (HGT)	-	-	-	-	-	-	-	-



CAT OF ACFT		A	B	C	D
OCA (H)	RNP 0.3	991 (712)	1005 (726)	1019 (740)	1033 (754)
STRAIGHT-IN					

NOTE:

CHANGES: NEW PROCEDURE.

ENKR RNP S RWY 05 (AR) - RECOMMENDED CODING

SN	PD	WI	Fly-over	°M (°T)	MAG VAR	DIST (NM)	REC NAVAID	TD	ALT (FT)	Speed (KT)	VPA (°)/TCH (FT)	ARC CENTRE RADIUS (NM)	RNP (NM)
10	IF	UPHAP	-	-	-16.0	-	-	-	A4000+	-	-	-	1.0
20	TF	KR653	-	-	-16.0	3.1	-	-	A2800+	-	-	-	1.0
30	RF	KR654	-	-	-16.0	2.0	-	R	A2300+	-	-	KR005 5,200	1.0
40	TF	KR651	-	-	-16.0	2.7	-	-	A1600+	K165-	-	-	1.0
50	TF	RW05	Y	-	-16.0	3.2	-	-	-	-	-3.8/50	-	0.3
60	TF	KR660	Y	-	-16.0	2.0	-	-	-	-	-	-	1.0
70	DF	DOGOD	-	-	-16.0	-	-	L	A3000	-	-	-	1.0
80	HM	DOGOD	-	143 (159.5)	-16.0	1 MIN	-	L	A3000	-	-	-	1.0

Note: Recommended coding is based on ARINC 424 and is provided solely to indicate which procedure design protection areas were used in the Instrument Flight Procedure Design process.

Note: Published OCA(H) values are obstacle clearance values. Decision heights (DH) below 250 FT shall not be used due to approach operation Type A limitations.

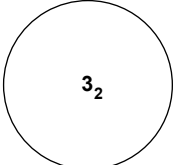
ENKR RNP S RWY 05 (AR) - SIGNIFICANT POINTS

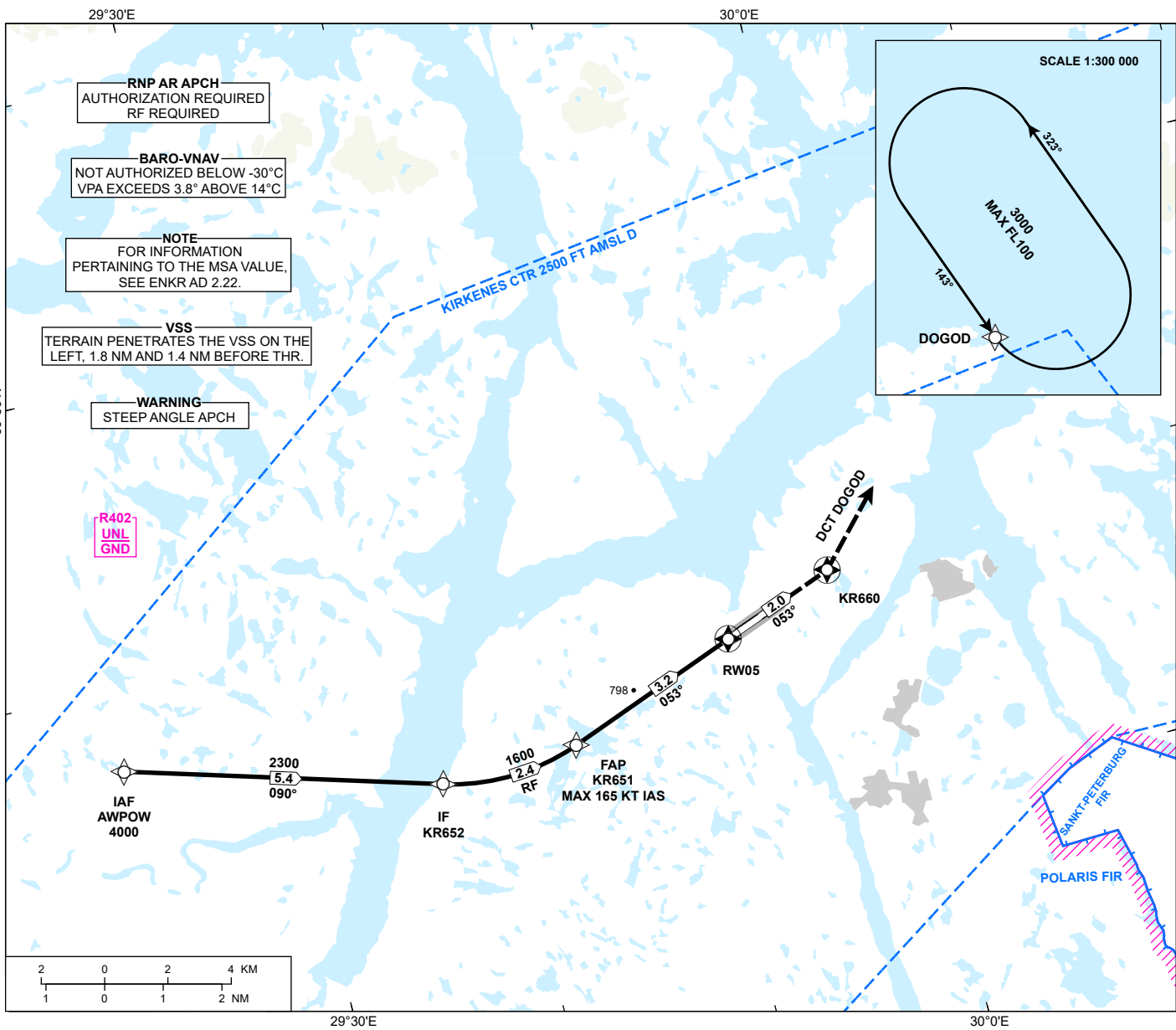
Name	Latitude	Longitude
DOGOD	695217.34N	0301943.62E
KR005	693624.73N	0294143.63E
KR651	694213.42N	0294339.56E
KR653	694011.57N	0293133.60E
KR654	694114.78N	0293622.99E
KR660	694404.68N	0295735.97E
UPHAP	693803.40N	0292502.09E

CHANGES: NEW PAGE

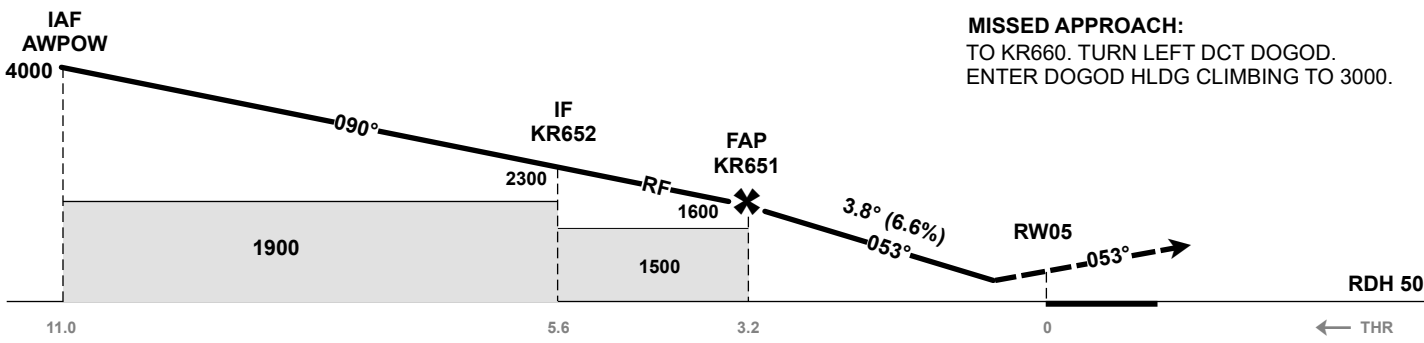
INSTRUMENT APPROACH CHART - ICAO

**KIRKENES
HØYBUKTMOEN
RNP W RWY 05 (AR)**
TRANSITION ALTITUDE
7000

 MSA 25 NM ARP	ATIS: 118.025	AD ELEV: 285
	TWR: 120.350 118.100 (122.100)	THR ELEV: 279
		HGT RELATED TO THR 05
		CIRCLING HGT RELATED TO AD ELEV
		DIST IN NM. ELEV, ALT AND HGT IN FT
	SCALE 1:200 000	VAR 16° E (2020)



DIST TO RW05	9	8	7	6	5	4	3	2
ALT (HGT)	-	-	-	-	-	-	-	-



CAT OF ACFT		A	B	C	D
OCA (H) STRAIGHT-IN	RNP 0.3	991 (712)	1005 (726)	1019 (740)	1033 (754)

NOTE:

CHANGES: NEW PROCEDURE.

ENKR RNP W RWY 05 (AR) - RECOMMENDED CODING

SN	PD	WI	Fly-over	°M (°T)	MAG VAR	DIST (NM)	REC NAVAID	TD	ALT (FT)	Speed (KT)	VPA (°)/TCH (FT)	ARC CENTRE RADIUS (NM)	RNP (NM)
10	IF	AWPOW	-	-	-16.0	-	-	-	A4000+	-	-	-	1.0
20	TF	KR652	-	-	-16.0	5.4	-	-	A2300+	-	-	-	1.0
30	RF	KR651	-	-	-16.0	2.4	-	L	A1600+	K165-	-	KR004 3.700	1.0
40	TF	RW05	Y	-	-16.0	3.2	-	-	-	-	-3.8/50	-	0.3
50	TF	KR660	Y	-	-16.0	2.0	-	-	-	-	-	-	1.0
60	DF	DOGOD	-	-	-16.0	-	-	L	A3000	-	-	-	1.0
70	HM	DOGOD	-	143 (159.5)	-16.0	1 MIN	-	L	A3000	-	-	-	1.0

Note: Recommended coding is based on ARINC 424 and is provided solely to indicate which procedure design protection areas were used in the Instrument Flight Procedure Design process.

Note: Published OCA(H) values are obstacle clearance values. Decision heights (DH) below 250 FT shall not be used due to approach operation Type A limitations.

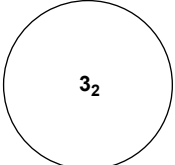
ENKR RNP W RWY 05 (AR) - SIGNIFICANT POINTS

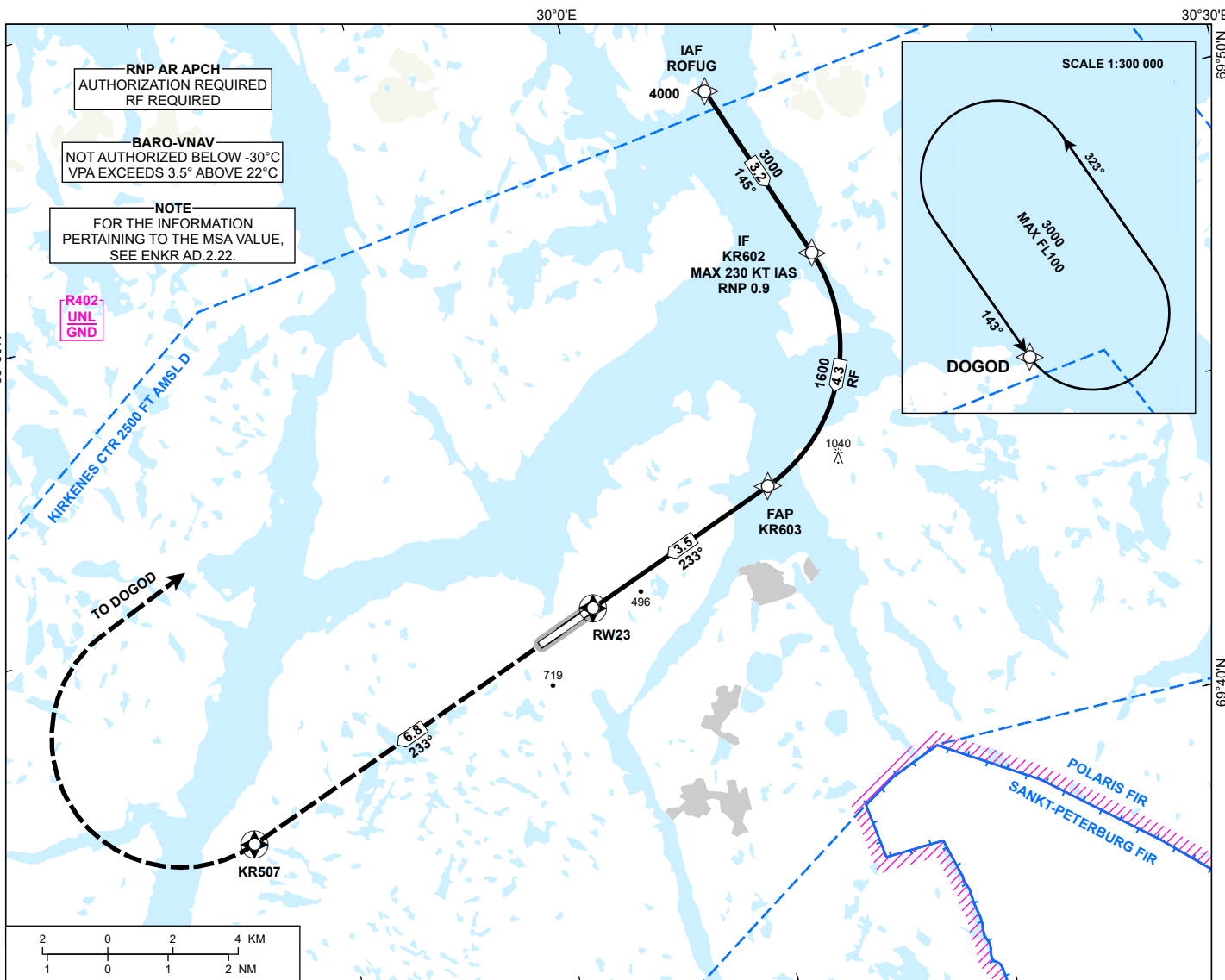
Name	Latitude	Longitude
AWPOW	694335.78N	0292154.33E
DOGOD	695217.34N	0301943.62E
KR004	694539.69N	0293949.75E
KR651	694213.42N	0294339.56E
KR652	694207.13N	0293654.01E
KR660	694404.68N	0295735.97E

CHANGES: NEW PAGE

INSTRUMENT APPROACH CHART - ICAO

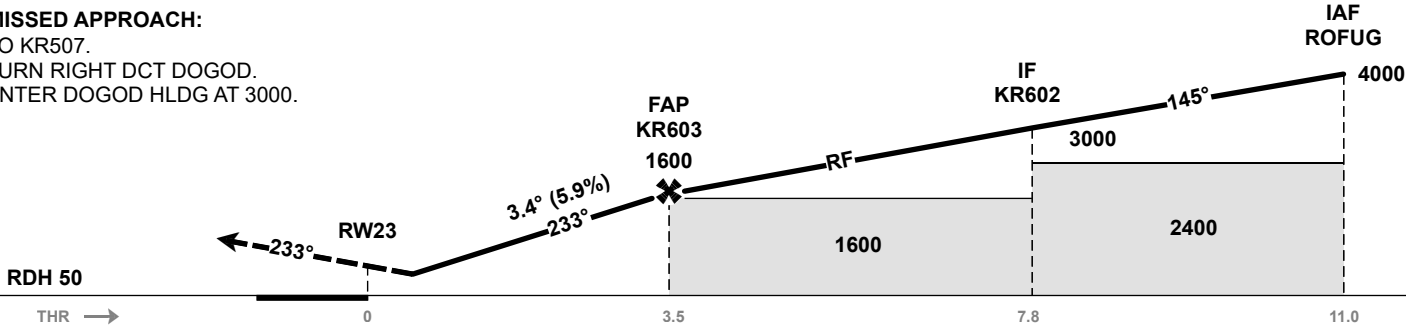
**KIRKENES
HØYBUKTMOEN
RNP N RWY 23 (AR)**
TRANSITION ALTITUDE
7000

 MSA 25 NM ARP	ATIS: 118.025	AD ELEV: 285
	TWR: 120.350 118.100 (122.100)	THR ELEV: 281
		HGT RELATED TO THR 23
		CIRCLING HGT RELATED TO AD ELEV
		DIST IN NM. ELEV, ALT AND HGT IN FT
	SCALE 1:200 000	VAR 16° E (2020)



DIST TO RW23	9	8	7	6	5	4	3	2
ALT (HGT)	-	-	-	-	-	-	-	-

MISSED APPROACH:
TO KR507.
TURN RIGHT DCT DOGOD.
ENTER DOGOD HLDG AT 3000.



CAT OF ACFT		A	B	C	D
OCA (H) STRAIGHT-IN	RNP 0.1 (2.5%*)	664 (383)	675 (394)	696 (415)	715 (434)
	RNP 0.1 (2.9%*)	-	-	686 (405)	698 (417)
	RNP 0.3 (2.5%*)	709 (428)	731 (450)	753 (472)	772 (491)
	RNP 0.3 (4.0%*)	680 (399)	692 (411)	703 (422)	714 (433)

NOTE: MNM MISSED APCH CLIMB GRADIENT.

CHANGES: NEW PROCEDURE.

ENKR RNP N RWY 23 (AR) - RECOMMENDED CODING

SN	PD	WI	Fly-over	°M (°T)	MAG VAR	DIST (NM)	REC NAVAID	TD	ALT (FT)	Speed (KT)	VPA (°)/TCH (FT)	ARC CENTRE RADIUS (NM)	RNP (NM)
10	IF	ROFUG	-	-	-16.0	-	-	-	A4000+	-	-	-	1.0
20	TF	KR602	-	-	-16.0	3.2	-	-	A3000+	K230-	-	-	1.0
30	RF	KR603	-	-	-16.0	4.3	-	R	A1600+	-	-	KR002 2.810	0.9
40	TF	RW23	Y	-	-16.0	3.5	-	-	-	-	-3.4/50	-	0.3
50	TF	KR507	Y	-	-16.0	6.8	-	-	-	-	-	-	1.0
60	DF	DOGOD	-	-	-16.0	-	-	R	A3000	-	-	-	1.0
70	HM	DOGOD	-	143 (159.5)	-16.0	1 MIN	-	L	A3000	-	-	-	1.0

Note: Recommended coding is based on ARINC 424 and is provided solely to indicate which procedure design protection areas were used in the Instrument Flight Procedure Design process.

Note: Published OCA(H) values are obstacle clearance values. Decision heights (DH) below 250 FT shall not be used due to approach operation Type A limitations.

ENKR RNP N RWY 23 (AR) - SIGNIFICANT POINTS

Name	Latitude	Longitude
DOGOD	695217.34N	0301943.62E
KR002	694734.60N	0300125.41E
KR507	694116.71N	0293636.82E
KR602	694830.22N	0300903.96E
KR603	694457.75N	0300418.82E
ROFUG	695130.74N	0300600.68E

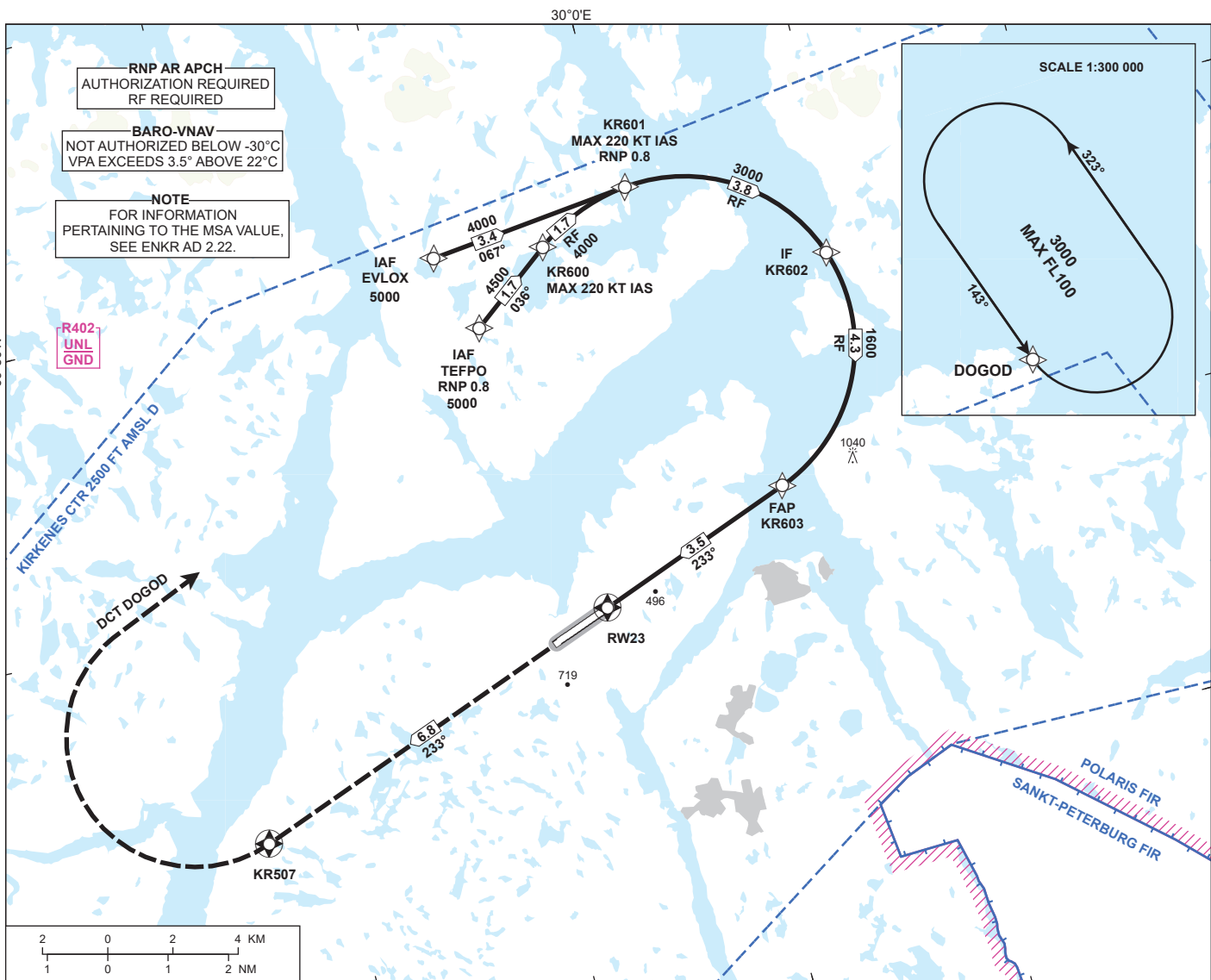
CHANGES: NEW PAGE

INSTRUMENT APPROACH CHART - ICAO

**KIRKENES
HØYBUKTMOEN
RNP W RWY 23 (AR)**

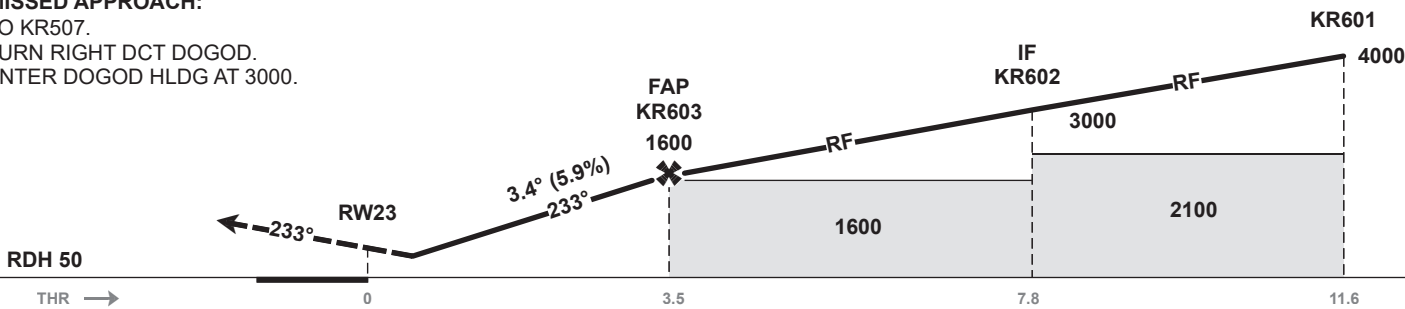
TRANSITION ALTITUDE
7000

<div style="border: 1px solid black; border-radius: 50%; width: 40px; height: 40px; margin: 0 auto; display: flex; align-items: center; justify-content: center;"> 3₂ </div> <p style="text-align: center; margin-top: 5px;">MSA 25 NM ARP</p>	ATIS: 118.025	AD ELEV: 285
	TWR: 120.350 118.100 (122.100)	THR ELEV: 281
		HGT RELATED TO THR 23
		CIRCLING HGT RELATED TO AD ELEV
		DIST IN NM. ELEV, ALT AND HGT IN FT
	SCALE 1:200 000	VAR 16° E (2020)



DIST TO RW23	9	8	7	6	5	4	3	2
ALT (HGT)	-	-	-	-	-	-	-	-

MISSED APPROACH:
TO KR507.
TURN RIGHT DCT DOGOD.
ENTER DOGOD HLDG AT 3000.



CAT OF ACFT		A	B	C	D
OCA (H) STRAIGHT-IN	RNP 0.1 (2.5%*)	664 (383)	675 (394)	696 (415)	715 (434)
	RNP 0.1 (2.9%*)	-	-	686 (405)	698 (417)
	RNP 0.3 (2.5%*)	709 (428)	731 (450)	753 (472)	772 (491)
	RNP 0.3 (4.0%*)	680 (399)	692 (411)	703 (422)	714 (433)

NOTE: MNM MISSED APCH CLIMB GRADIENT.

CHANGES: NEW PROCEDURE.

ENKR RNP W RWY 23 (AR) - RECOMMENDED CODING

SN	PD	WI	Fly-over	°M (°T)	MAG VAR	DIST (NM)	REC NAVAID	TD	ALT (FT)	Speed (KT)	VPA (°)/TCH (FT)	ARC CENTRE RADIUS (NM)	RNP (NM)
10	IF	EVLOX	-	-	-16.0	-	-	-	A5000+	-	-	-	1.0
20	TF	KR601	-	-	-16.0	3.4	-	-	A4000+	K220-	-	-	0.8
10	IF	TEFPO	-	-	-16.0	-	-	-	A5000+	-	-	-	0.8
20	TF	KR600	-	-	-16.0	1.7	-	-	A4500+	K220-	-	-	0.8
30	RF	KR601	-	-	-16.0	1.7	-	R	A4000+	-	-	KR001 3.100	0.8
40	RF	KR602	-	-	-16.0	3.8	-	R	A3000+	-	-	KR002 2.810	0.8
50	RF	KR603	-	-	-16.0	4.3	-	R	A1600+	-	-	KR002 2.810	0.8
60	TF	RW23	Y	-	-16.0	3.5	-	-	-	-	-3.4/50	-	0.3
70	TF	KR507	Y	-	-16.0	6.8	-	-	-	-	-	-	1.0
80	DF	DOGOD	-	-	-16.0	-	-	R	A3000	-	-	-	1.0
90	HM	DOGOD	-	143 (159.5)	-16.0	1 MIN	-	L	A3000	-	-	-	1.0

Note: Recommended coding is based on ARINC 424 and is provided solely to indicate which procedure design protection areas were used in the Instrument Flight Procedure Design process.

Note: Published OCA(H) values are obstacle clearance values. Decision heights (DH) below 250 FT shall not be used due to approach operation Type A limitations.

ENKR RNP W RWY 23 (AR) - SIGNIFICANT POINTS

Name	Latitude	Longitude
DOGOD	695217.34N	0301943.62E
EVLOX	694958.93N	0295051.68E
KR001	694717.38N	0300130.95E
KR002	694734.60N	0300125.41E
KR507	694116.71N	0293636.82E
KR600	694943.75N	0295602.15E
KR601	695021.51N	0300031.56E
KR602	694830.22N	0300903.96E
KR603	694457.75N	0300418.82E
TEFPO	694841.36N	0295209.89E

CHANGES: NEW PAGE