

TEL:.....+47 67 03 00 00

E-mail:.....aim@avinor.no



AVINOR

NORWAY

AERONAUTICAL INFORMATION
MANAGEMENT
P.O. BOX 150
NO-2061 GARDERMOEN

AIP AIRAC SUP
19/2023
EFF 07 SEP 2023

Publication date: 10 AUG 2023

**ENOV - Ny RNP-prosedyre for Ørsta-Volda lufthavn,
Hovden**

Vedlagt denne AIP SUP ny RNP-B prosedyre for Ørsta-Volda lufthavn,
Hovden.

- Vedlegg -

**ENOV - New RNP procedure for Ørsta-Volda airport,
Hovden**

Attached to this AIP SUP new RNP-B procedure for Ørsta-Volda airport,
Hovden.

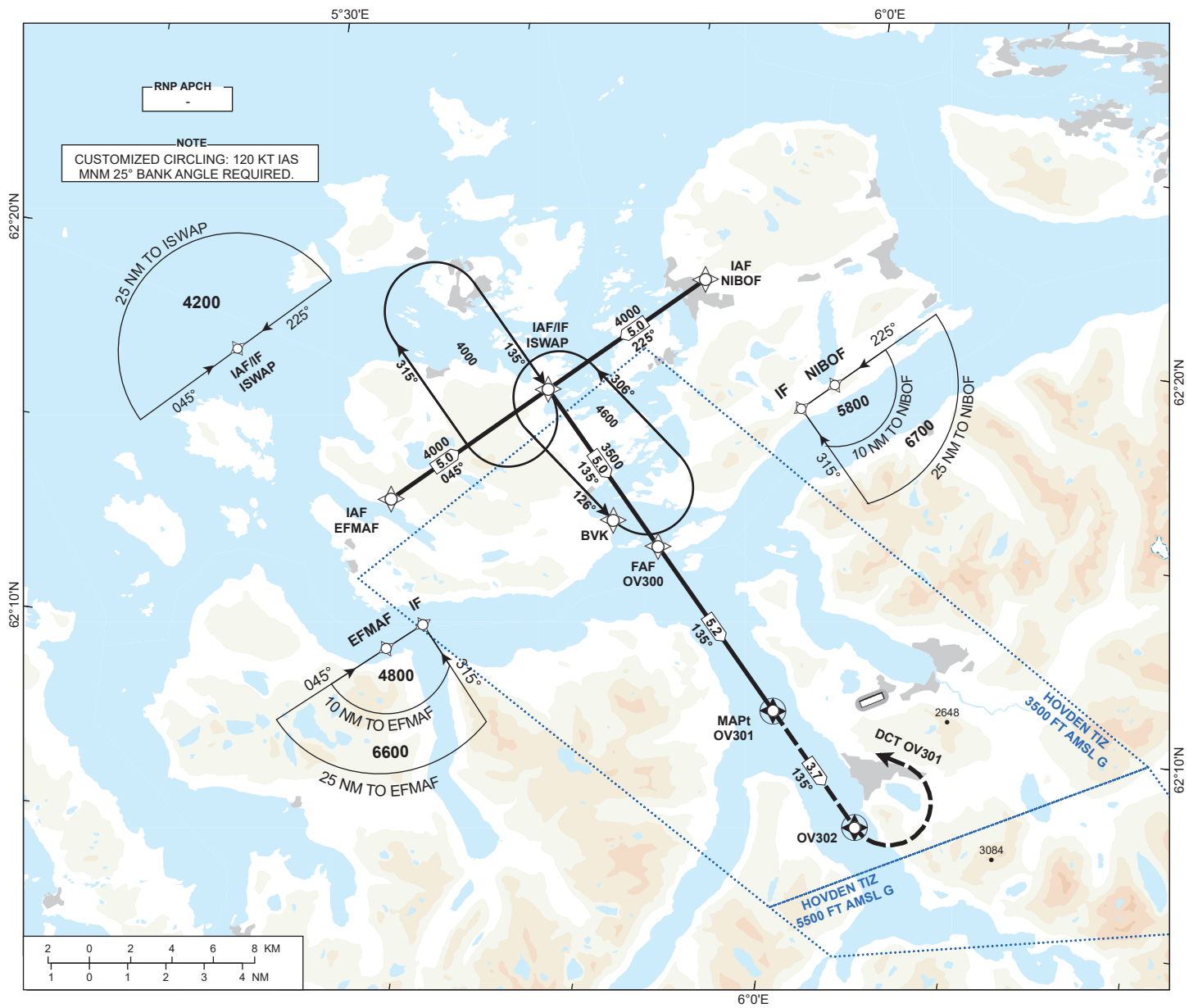
- Attachment -

INSTRUMENT APPROACH CHART - ICAO

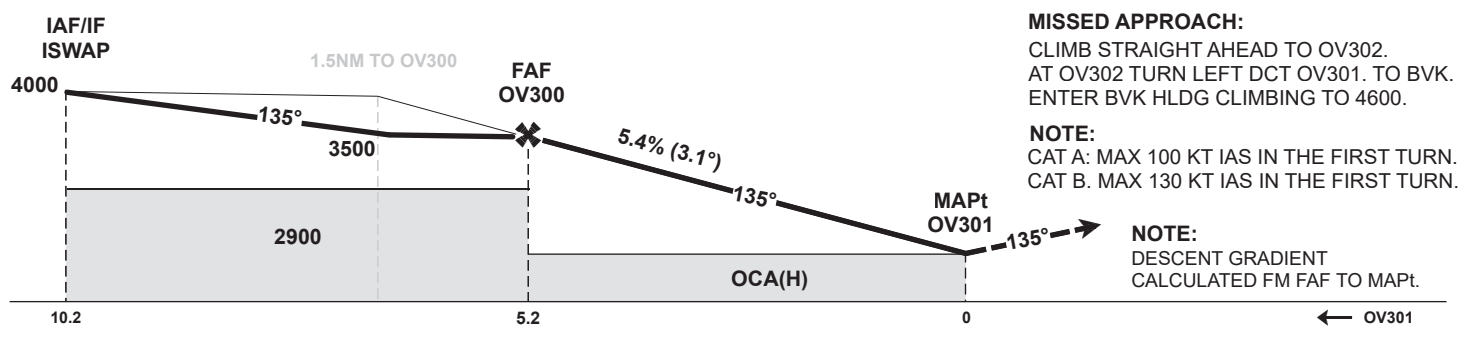
**ØRSTA-VOLDA
HOVDEN
RNP-B**

APP: 129.325	AD ELEV: 243
AFIS: 118.900	
VDF: 118.900	HGT RELATED TO AD ELEV
	CIRCLING HGT RELATED TO AD ELEV
	DIST IN NM. ELEV, ALT AND HGT IN FT
SCALE 1:300 000	VAR 2° E (2020)

TRANSITION ALTITUDE
7000



DIST TO OV301	8	7	6	5	4	3	2	1
ALT (HGT)	-	-	-	3430 (3187)	3110 (2867)	2780 (2537)	2460 (2217)	2130 (1887)



CAT OF ACFT		A	B	C	D
CIRCLING	2.5%	2340 (2097)	3430 (3187)	-	-
	2.5%*	-	2460 (2217)	-	-
	4.1%*	1810 (1567)	1960 (1717)	-	-

NOTE: CIRCLING N OF AD ONLY. *CUSTOMIZED CIRCLING.

CHANGES: NEW PROCEDURE.

ENOV RNP-B - RECOMMENDED CODING

SN	PD	WI	Fly-over	°M(°T)	MAG VAR	DIST (NM)	REC NAV AID	TD	ALT (FT)	Speed (KT)	VPA(°)/TCH(FT)	ARC CENTRE RADIUS (NM)	RNP (NM)
010	IF	EFMAF	-	-	-2.0	-	-	-	A4800+	-	-	-	1.0
020	TF	ISWAP	-	-	-2.0	5.0	-	-	A4000+	-	-	-	1.0
030	TF	OV300	-	-	-2.0	5.0	-	-	A3500+	-	-	-	1.0
010	IF	NIBOF	-	-	-2.0	-	-	-	A5800+	-	-	-	1.0
020	TF	ISWAP	-	-	-2.0	5.0	-	-	A4000+	-	-	-	1.0
030	TF	OV300	-	-	-2.0	5.0	-	-	A3500+	-	-	-	1.0
010	IF	ISWAP	-	-	-2.0	-	-	-	A4200+	-	-	-	1.0
020	TF	OV300	-	-	-2.0	5.0	-	-	A3500+	-	-	-	1.0
030	TF	OV301	Y	-	-2.0	5.2	-	-	-	-	-3.1/-	-	0.3
040	TF	OV302	Y	-	-2.0	3.7	-	-	-	-	-	-	1.0
050	DF	OV301	-	-	-2.0	-	-	L	-	-	-	-	1.0
060	TF	BVK	-	-	-2.0	6.5	-	-	-	-	-	-	1.0
070	HM	BVK	-	126 (127.9)	-2.0	1 MIN	-	L	A4600	-	-	-	1.0

Note: Recommended coding is based on ARINC 424 and is provided solely to indicate which procedure design protection areas were used in the Instrument Flight Procedure Design process.

ENOV RNP-B - SIGNIFICANT POINTS

Name	Latitude	Longitude
EFMAF	621409.84N	0053610.83E
ISWAP	621734.65N	0054358.55E
NIBOF	622059.01N	0055148.06E
OV300	621356.26N	0055117.05E
OV301	621007.41N	0055853.84E
OV302	620724.54N	0060417.22E

CHANGES: NEW PAGE